



## USD 229 - Blue Valley Schools District Needs Assessment Budgeting Table of Contents

1) Building Needs Assessment	Pg 1-7
2) State Assessments Review	Pg 8
3) District Attendance Centers	Pg 9
4) Resources & Data	Pg 10-13
5) Process Flowchart	Pg 14

## 2021-2022 School Year Building Needs Assessment for 2022-2023 Budget Considerations

District: **229 Blue Valley**

Bldg #

Grades Served:

School: **Blue Valley Northwest High**

9-12

**Please consider the following questions as you complete the needs assessment for your building.**

**SECTION 1: Student Needs**

**Notes**

a. Student Headcount	1,570.0	See Section 1 Data tab
b. Number of students with an active IEP	105.0	See Section 1 Data tab
c. Number of students enrolled in English Language Learner (ELL) services	14.0	See Section 1 Data tab
d. Number of students identified as At-Risk (Free lunch)?	185.0	See Section 1 Data tab
e. Pupil-Teacher Ratio Average	Yes	See Pupil-to-Teacher Ratio tab
f. Pupil-Teacher Ratio Median	Yes	See Pupil-to-Teacher Ratio tab
g. Are the needs of Foster Care Students being met? If no, what supports are needed?	Yes	Assigned District coordinator to address foster student needs
h. Are there gaps in student success among race/ethnicity student subgroups?	Yes	
i. Is there a tiered system of support to target reading growth?	No	Intervention support system exists within the building and MTSS is under development district-wide
j. Is there a tiered system of support to target math growth?	No	Intervention support system exists within the building and MTSS is under development district-wide
k. Are there local assessments to measure reading growth?	Yes	Read 180
l. Are there local assessments to measure math growth?	No	
m. Are there learning opportunities for students to focus on academic needs outside the traditional classroom setting?	Yes	Buildings have intervention opportunities for students such as reading specialist services, math intervention, Read 180, etc.
n. Reviewing state assessment data, what steps are you taking for all students to maximize their scores?	Yes	Buildings are writing their blueprints (school learning plans); setting goals around state assessment performance, including action steps
o. Are there set targets/goals to move students out of proficiency Levels 1 and 2 on state assessments?	Yes	For Spring 2023, 65% of students in BV will score a 3 or 4 on the KAP ELA assessment. For Spring 2023, 55% of students in BV will score a 3 or 4 on the KAP Math assessment.

## 2021-2022 School Year Building Needs Assessment for 2022-2023 Budget Considerations

<b>District:</b> 229 Blue Valley	<b>Bldg #</b>	<b>Grades Served:</b>
<b>School:</b> Blue Valley Northwest High	7774	9-12

**Please consider the following questions as you complete the needs assessment for your building.**

SECTION 2: State Board of Education Outcomes (please utilize your district KESA (accreditation) and Star Recognition plans/rubrics)	Notes
a. How is social/emotional growth being measured?	Yes Panorama
b. What are the targets/goals related to social/emotional growth?	None Parent opt in survey - District goal to effectively use survey data
c. How do you determine students are ready for Kindergarten? (only if building serves Kindergarteners)	N/A
d. What are the targets/goals related to Kindergarten Readiness? (only if building serves Kindergarteners)	N/A
e. How are successes of Individual Plans of Study being measured?	Yes Focus on increasing number of student with at least one market value asset (MVA). Individual Plans of Study are initiated and monitored with individual student and parent input with counselor oversight. Measurement occurs with student acquisition of credit, graduation rates, and post high school <del>surveying</del>
f. What are the targets/goals related to postsecondary completion/attendance? (only if building serves Grade 12)	Yes Monitor data through 1) National Student Clearinghouse reports, 2) KSDE report card site
g. How are you ensuring students are civically engaged?	Yes Documented in KESA Report

## 2021-2022 School Year Building Needs Assessment for 2022-2023 Budget Considerations

<b>District:</b> 229 Blue Valley	<b>Bldg #</b>	<b>Grades Served:</b>
<b>School:</b> Blue Valley Northwest High	7774	9-12

**Please consider the following questions as you complete the needs assessment for your building.**

<b>SECTION 3: Curriculum Needs</b>		<b>Notes</b>
a. What extended learning opportunities are provided (after school programs, summer school programs, etc.)?	Yes	Summer school programs for students who need to recover credits and options for all students to take core credits. Also providing after-school space for extended learning.
b. Are there appropriate and adequate instructional materials?	Yes	District provided instructional materials for all core content areas. Curriculum materials are reviewed and updated on a cyclical basis. Materials are chosen based on alignment to state standards and district curriculum.
c. Is current technology appropriate? If no, what technology is needed to support the curriculum?	Yes	Each student in grades 9-12 are provided a Macbook Air. Most classrooms are outfitted with projection and teachers are all assigned individual devices.
<b>SECTION 4: Educational Capacities (pursuant to K.S.A. 72-3218)</b>		<b>Notes</b>
a. Subjects and areas of instruction necessary to meet the graduation requirements adopted by the state board of education are taught. (only if building serves Grade 12)	Yes	
b. Is every child in your school provided at least the following capacities?	Yes	
1. Sufficient oral and written communication skills to enable students to function in complex and rapidly changing civilization.	Yes	
2. Sufficient knowledge of economic, social, and political systems to enable students to make informed choices.	Yes	
3. Sufficient understanding of governmental processes to enable the student to understand the issues that affect his or her community, state and nation.	Yes	
4. Sufficient self-knowledge and knowledge of his or her mental and physical wellness.	Yes	
5. Sufficient grounding in the arts to enable each student to appreciate his or her cultural and historical heritage.	Yes	

## 2021-2022 School Year Building Needs Assessment for 2022-2023 Budget Considerations

<b>District:</b> 229 Blue Valley	<b>Bldg #</b>	<b>Grades Served:</b>
<b>School:</b> Blue Valley Northwest High	7774	9-12

Please consider the following questions as you complete the needs assessment for your building.		
6. Sufficient training or preparation for advanced training in either academic or vocational fields so as to enable each child to choose and pursue life work intelligently.	Yes	
7. Sufficient levels of academic or vocational skills to enable students to compete favorably with their counterparts in surrounding states, in academics or in job market.	Yes	

## 2021-2022 School Year Building Needs Assessment for 2022-2023 Budget Considerations

<b>District:</b> 229 Blue Valley	<b>Bldg #</b>	<b>Grades Served:</b>
<b>School:</b> Blue Valley Northwest High	7774	9-12

**Please consider the following questions as you complete the needs assessment for your building.**

SECTION 5: Staff Needs		Notes
a. Is there adequate personnel/staff to meet the needs of the school and the needs of students under ESEA guidelines, which requires every classroom to contain an educator who is certified in the content area being taught in said classroom, and meet the goals of the school?	Yes	Appropriate/effective class size ratios monitored throughout the spring for the following school year
b. How many classified support staff are currently employed?	41	20-May-22
c. How many classified support staff are needed?		Competitive labor market is challenging ability to properly fill support staff vacancies.
d. Are there enough appropriately licensed support personnel such as counselors, librarians, nurses, etc.?	Yes	Student needs and enrollment are monitored each spring for the following school year when it comes to all staffing needs, both certified and classified.
e. Are principals & other key staff trained to provide instructional leadership and professional development to teachers?	Yes	District Learning Leader monthly meetings
f. What staff development is necessary for teachers to support student success and meet the school improvement goals?	Yes	Job-embedded, relevant, collaborative, sustainable, and results-oriented professional learning that advances educator effectiveness to further district and school improvement goals and ensure life readiness and personal excellence for all students
SECTION 6: Facility Needs		Notes
a. Is there adequate space for student learning?	Yes	Adequate space for student learning is addressed either through the capital outlay committee or bond committee process
b. Are there necessary repairs and/or adjustment to the existing space that need to be made?	Yes	Necessary repairs are addressed through capital outlay or bond requests.
c. Are additional School Buses needed or any additional Routes needed?	No	Based on modified bell schedules for 2022-23, District anticipates adequate regular route capacity for all district attendance centers.

## 2021-2022 School Year Building Needs Assessment for 2022-2023 Budget Considerations

<b>District:</b> <u>229 Blue Valley</u>	<b>Bldg #</b>	<b>Grades Served:</b>
<b>School:</b> <u>Blue Valley Northwest High</u>	<b>7774</b>	<b>9-12</b>

**Please consider the following questions as you complete the needs assessment for your building.**

<b>SECTION 7: Family Needs/Community Relations</b>		<b>Notes</b>
a. Do you have regular events to engage parents with teachers?	Yes	Back-to-School night, PTO-sponsored events, parent teacher conferences
b. What types of caregiver training programs (teaching guardians how to give students help with homework, use technology that students will be required to use, etc.) are provided?	Yes	District website has parent tutorials for Canvas and The Learning Connection
c. Do you have an active Site Council?	Yes	
d. Do you have active PTO, PTA, Booster Club, or other organizations with parent leadership?	Yes	
e. What types of communication exists with families? Is it adequate?	Yes	Weekly school e-newsletter, social media, website, e-flyers
f. What types of communication/social media exists with your community? Is it adequate?	Yes	Regular district e-newsletter, quarterly district news magazine, Facebook, Twitter, Instagram, LinkedIn, podcast, website, mobile app

## 2021-2022 School Year Building Needs Assessment for 2022-2023 Budget Considerations

<b>District:</b> 229 Blue Valley	<b>Bldg #</b>	<b>Grades Served:</b>
<b>School:</b> Blue Valley Northwest High	7774	9-12

**Please consider the following questions as you complete the needs assessment for your building.**

SECTION 8: School Data		Notes
a. Building Attendance Rate	95.5	See Section 8-KSDE Report Card
b. Building Chronic Absenteeism Rate	10.9	See Section 8-KSDE Report Card
c. District Chronic Absenteeism Rate	7.5	See Section 8-KSDE Report Card
d. District Graduation Rate	97.5	See Section 8-KSDE Report Card
e. District Dropout Rate	0.2	See Section 8-KSDE Report Card
<b>SECTION 8A: High School Needs (buildings with grades 10 through 12 only)</b>		Notes
a. What is our building graduation rate	96.5	See Section 8-KSDE Report Card
b. What is our building dropout rate?	0.3	See Section 8-KSDE Report Card
c. What is our average comprehensive ACT score?	24.8	See Section 8-KSDE Report Card
<b>SECTION 9: Other Data</b>		Notes
a. Based on the building leadership team's analysis, what are the barriers your school faces with non-assessment related issues?		Overall response documented on State Assessments Review tab
1. Can these be achieved with additional resources?		Overall response documented on State Assessments Review tab
2. Why or why not?		Overall response documented on State Assessments Review tab
b. Additional building unique items:		



## 2020-2021 State Assessments Review for 2022-2023 Budget Considerations

District: <b>229 Blue Valley</b>	Bldg #	Grades Served:
School: <b>Blue Valley Northwest High</b>	<b>7774</b>	9-12

**(A) Identify the barriers that must be overcome for each student to achieve grade level proficiency on assessments.**

1. Additional state funding that allows for targeted services for students who are academically at risk. 2. Additional state funding that is targeted for math interventions. 3. Additional state funding that is targeted for reading/ELA interventions. 4. Additional state funding for supporting paraprofessionals roles. 5. Fewer and more purposeful state-mandated assessments at the high school level. The current sophomore and juniors are required to take the KAP and all students are required to take the new dyslexia screening. In addition all juniors are given the ACT free of charge by the state. The assessments need to be more streamlined and the juniors should be given the ACT outside of the school day.

**(B) Identify the budget actions that should be taken to address and remove those barriers.**

The District structures the operating budget to achieve pupil-to-teacher ratios to maximize student achievement outcomes, to provide competitive compensation and benefit packages for all staff recruitment and retention, and to ensure efficient administrative and support staffing levels to augment student learning. Barriers identified in (A) above are addressed through the annual staffing need communications between building leadership and central office administration. Non-staffing related barriers will be addressed through allocated building budget funds and district level curriculum and instruction resources. Due to declining enrollment from the pandemic, the decrease to operating resources for FY 2022-23 will be offset by utilization of ESSER funding.

**(C) Identify the amount of time the board estimates it will take for each student to achieve grade level proficiency on the state assessments if the budget actions would be implemented.**

The District has set a goal of moving 55% to level 3 or 4 in math and 65% in ELA reading for FY 2022-23. The Building Leadership Teams utilize summer leadership work sessions during the summer of 2022 to review the building's individual data to set building goals for standard or accelerated growth. Based on the anticipated trajectory, the District goal will be to have 75% at levels 3 or 4 in approximately 5-6 years. However, given student's individual learning issues it is unlikely that the District will realistically achieve 100%. These timelines could be accelerated if special education funding approached 92% of excess cost, which would redirect general fund and local option budget resources for additional certified staffing to achieve grade level proficiency.

**(D) Board Rationale/Comments**

The Board of Education received access to the building needs assessment on July 18, 2022 and reviewed them as a part of the budget process for the 2022-23 school year.

\_\_\_\_\_

**Board President**

\_\_\_\_\_

**Date**

Budget Fiscal Year 2023  
 Needs Assessment Year 2022  
 State Assessment Review Year 2021

9/20/2020  
 Headcount  
 Grand Total

Bldg #	Building Name	Building Level	Grades Served	Grand Total
0756	Lakewood Elementary	Elementary	K-5	553
0757	Lakewood Middle	Middle School	6-8	589
0758	Cedar Hills Elementary	Elementary	K-5	595
0759	Timber Creek Elementary School	Elementary	K-5	614
0765	Liberty View Elementary	Elementary	K-5	415
0766	Blue Valley Dist Johnson Co	Central Office	N/A - Central Office	752
0767	Oxford Middle	Middle School	6-8	580
0768	Stanley Elementary	Elementary	K-5,PK (w/IEP),PK	566
0769	Blue Valley North High	High School	9-12,NG	1531
0770	Blue Valley High	High School	9-12	1489
0771	Morse Elementary	Elementary	K-5	359
0772	Valley Park Elementary	Elementary	K-5	644
0773	Leawood Elementary	Elementary	K-5	568
0774	Stilwell Elementary	Elementary	K-5	244
0776	Blue Valley Middle	Middle School	6-8	560
0777	Mission Trail Elementary	Elementary	K-5,PK (w/IEP),PK	388
0778	Leawood Middle	Middle School	6-8	477
0779	Overland Trail Elementary	Elementary	K-5,PK (w/IEP),PK	630
0780	Indian Valley Elementary	Elementary	K-5	351
0781	Overland Trail Middle	Middle School	6-8	511
0782	Oak Hill Elementary	Elementary	K-5	469
0783	Cottonwood Point Elementary	Elementary	K-5	344
0784	Harmony Middle	Middle School	6-8	534
0785	Harmony Elementary	Elementary	K-5	503
0820	Blue Valley Southwest High School	High School	9-12	1072
0823	Aubry Bend Middle School	Middle School	6-8	779
0937	Wolf Springs Elementary School	Elementary	K-5,PK (w/IEP),PK	563
7773	Prairie Star Elementary	Elementary	K-5	375
7774	Blue Valley Northwest High	High School	9-12	1573
7775	Heartland Elementary	Elementary	K-5	384
7776	Prairie Star Middle	Middle School	6-8	449
7777	Blue Valley West High	High School	9-12,NG	1655
7786	Blue River Elementary	Elementary	K-5	484
7787	Pleasant Ridge Middle	Middle School	6-8	599
7788	Sunset Ridge Elementary	Elementary	K-5,PK (w/IEP),PK	408
7790	Sunrise Point Elementary	Elementary	K-5	458

**Resources**

<b>KSDE's Data Central</b>	
<a href="#">Performance Accountability Report</a>	Demographics, Postsecondary Success Preparation & Effectiveness, STAR Recognition status, Graduation/Success/Effective Rate, Attendance & Dropout Rate, Chronic Absenteeism, ESSA Expenditures per Pupil, Academic Success by Demographics and ACT Performance. <i>*Data is available at district level and building level.</i>
<a href="#">Longitudinal Achievement Report</a>	State Assessments Longitudinal Performance Level. <i>*Data is available at district level and building level.</i>
<a href="#">Public Report Card</a>	Information for Social-Emotional, Kindergarten Readiness, Individual Plans of Study, Graduation, Civic Engagement, Postsecondary Success, IDEA State Performance Plan, Comparative Performance & Fiscal System (Budget data), Teacher Licensure, Dropout, Attendance, Performance Level Reports, ACT Scores, and National Assessment of Educational Progress. <i>*Data is available at district level and most, but not all, is also available at building level.</i>
<a href="#">Kansas K-12 Reports</a>	Attendance Rate, Building Dates of Construction, Building Schedule, Inclement Weather & Inservice Dates, Concurrent High School Enrollment, Lunch Headcount (Free & Reduced), Headcount Enrollment, & Personnel by Type (Certified & Non-Certified) <i>*Data is available at district level and most, but not all, is also available at building level.</i>
<b>Data Central (School Finance Reports)</b>	
<a href="#">Financial Accountability Report</a>	FTE Enrollment, Expenditures for Fund 06 & 08, 16, 62 & 63, All Other Funds and Total of All Funds, State Aid for all weighting categories and Virtual, Total Expenditures for Fund 11, 13, 14, 15, 30, 34, and 51, Fund 08 Transfers, Article 6, Section 6 Constitutional Challenge Expenditures, General Obligation Bonded Indebtedness, and Demographic Headcount. <i>*Data is available at district level only.</i>
<a href="#">Budget Documents</a>	Budget At-a-Glance, Profile, Form 150, Summary and Budget Codes. <i>*Data is available at district level only.</i>
<a href="#">Comparative Performance &amp; Fiscal System (CPFS)</a>	Budget data by fund. <i>*Data is available at district level only.</i>
<a href="#">CPA Reports</a>	Payments made to each organization by County. <i>*Data is available at district level only.</i>
<a href="#">School Finance Reports Warehouse</a>	Bond Proceed Projects, State Foundation (General State) Aid/Supplemental General State Aid, Transportation Data, Transportation Costs (Report), Cash Balances, Current Operating Expenditures, Expenditures per Pupil, Total Expenditures, Meal Pricing Data, Headcount Enrollment (Public & Private, Accredited), Personnel Reports (Certified & Non-Certified), Pupil-Teacher Ratio, Kindergarten Formats (Building & District), Bonded Indebtedness, Salary Reports (Principals, Superintendents & Teachers), Mill Rates, Assessed Valuation <i>*Data is available at district level only unless specified.</i>
<b>KSDE's Web Applications</b>	
AMOSS - Academic Measures of Student Success	
Dropout/Graduation Summary Report	
EDCS (Licensed Personnel Report)	
Kansas Education Systems Accreditation (KESA)	
Kansas Integrated Accountability System (KIAS)	
LCP System	
Pathways	
Principals Building Report (PBR)	
SPEDPro	
Star Recognition	
Superintendent's Organization Report (SO66)	
<b>Local</b>	
MAPP	
NAEP	
Other Local Assessments	
MTSS data	
KansaStar (if applicable)	
ASQ (Kindergarten Readiness Survey)	
Early Childhood Programs	
Social/Emotional Measures	
Civic Engagement Programs	
Curriculum	
Bullying Prevention	
Career and Technical Education (CTE)	
Child Nutrition and Wellness Programs	
Evidence Based At-Risk Practices/Programs	
Graduation Requirements	
Individual Plan of Study Program	
Professional Development Plans	
Parent Engagement	
Community Engagement	
Title I Programs	
Other:	
Other:	
Other:	
Other:	

**FY 2021-22**

<b>enrollment</b>	<b>IEP</b>	<b>ELL</b>	<b>FRM</b>	<b>school</b>	<b>state_school_code</b>
570.0	80.0	16.0	47.0	LKE	0756
603.0	60.0	4.0	61.0	LKM	0757
611.0	65.0	14.0	42.0	CHE	0758
605.0	61.0	-	8.0	TCE	0759
397.0	68.0	8.0	34.0	LVE	0765
597.0	53.0	15.0	108.0	OMS	0767
380.0	112.0	-	42.0	STN	0768
328.0	239.0	-	21.0	HLC	0768
1,569.0	117.0	5.0	202.0	BVN	0769
1,497.0	104.0	-	149.0	BVH	0770
360.0	45.0	2.0	21.0	MOR	0771
630.0	80.0	27.0	110.0	VPE	0772
570.0	77.0	-	21.0	LES	0773
252.0	43.0	-	26.0	STL	0774
558.0	65.0	1.0	68.0	BVM	0776
394.0	72.0	-	45.0	MTE	0777
489.0	52.0	-	39.0	LMS	0778
597.0	82.0	48.0	88.0	OTE	0779
353.0	48.0	15.0	79.0	IVE	0780
514.0	59.0	6.0	93.0	OTM	0781
460.0	66.0	22.0	56.0	OHE	0782
353.0	62.0	3.0	20.0	CPE	0783
530.0	49.0	-	43.0	HMS	0784
506.0	70.0	-	37.0	HES	0785
1,083.0	87.0	-	45.0	SW	0820
762.0	63.0	-	32.0	ABM	0823
371.0	73.0	-	12.0	PSE	7773
1,570.0	105.0	14.0	185.0	NW	7774
383.0	56.0	16.0	40.0	HRT	7775
454.0	52.0	-	25.0	PSM	7776
1,681.0	126.0	10.0	123.0	BVW	7777
505.0	71.0	-	44.0	BRE	7786
600.0	42.0	-	25.0	PRM	7787
400.0	81.0	2.0	14.0	SRE	7788
461.0	75.0	19.0	25.0	SPE	7790
595.0	102.0	-	20.0	WSE	0937

**BVNW**

	9TH	10TH	11TH	12TH	
Model Projected	358	404	355	381	1,498
Current Feeder	354				
Current Staffing	81.9	81.9	81.9		

1,751 Program Capacity

PTR Guideline	18.7	18.7	18.7
Projected Staffing	80.1	80.1	80.1
+/- Staffing	1.8	1.8	1.8

<u>Org. No.</u>	<u>Bldg. No.</u>	<u>Organization Name</u>	<u>Building Name</u>	<u>Attendance Rate</u>	<u>% Chronic Absent</u>	<u>Dist Chronic abs</u>	<u>Dist grad</u>	<u>Dist dropout</u>	<u>Bldg grad</u>	<u>Bldg dropout</u>	<u>ACT avg</u>
D0229	0756	Blue Valley	Lakewood Elementary	96.8	7.0	7.5					
D0229	0757	Blue Valley	Lakewood Middle	97.8	2.4	7.5					
D0229	0758	Blue Valley	Cedar Hills Elementary	97.2	3.1	7.5					
D0229	0759	Blue Valley	Timber Creek Elementary School	96.4	6.4	7.5					
D0229	0765	Blue Valley	Liberty View Elementary	97.1	2.8	7.5					
D0229	0767	Blue Valley	Oxford Middle	98.4	1.5	7.5					
D0229	0768	Blue Valley	Stanley Elementary	96.4	8.0	7.5					
D0229	0769	Blue Valley	Blue Valley North High	92.7	22.9	7.5	97.5	0.2	95.9	0.7	25
D0229	0770	Blue Valley	Blue Valley High	95.3	11.6	7.5	97.5	0.2	97.7	0.5	24.3
D0229	0771	Blue Valley	Morse Elementary	97.4	2.0	7.5					
D0229	0772	Blue Valley	Valley Park Elementary	97	7.0	7.5					
D0229	0773	Blue Valley	Leawood Elementary	97.3	1.8	7.5					
D0229	0774	Blue Valley	Stilwell Elementary	94.8	13.4	7.5					
D0229	0776	Blue Valley	Blue Valley Middle	97.2	5.0	7.5					
D0229	0777	Blue Valley	Mission Trail Elementary	95.7	11.0	7.5					
D0229	0778	Blue Valley	Leawood Middle	96.7	4.4	7.5					
D0229	0779	Blue Valley	Overland Trail Elementary	96.2	10.9	7.5					
D0229	0780	Blue Valley	Indian Valley Elementary	96.7	6.2	7.5					
D0229	0781	Blue Valley	Overland Trail Middle	97.1	5.7	7.5					
D0229	0782	Blue Valley	Oak Hill Elementary	96.6	8.5	7.5					
D0229	0783	Blue Valley	Cottonwood Point Elementary	97.7	2.1	7.5					
D0229	0784	Blue Valley	Harmony Middle	98.4	2.1	7.5					
D0229	0785	Blue Valley	Harmony Elementary	97.5	3.6	7.5					
D0229	0820	Blue Valley	Blue Valley Southwest High School	95.1	11.4	7.5	97.5	0.2	98.9	0	22.9
D0229	0823	Blue Valley	Aubry Bend Middle School	97.3	3.6	7.5					
D0229	0937	Blue Valley	Wolf Springs Elementary School	96.2	7.9	7.5					
D0229	7773	Blue Valley	Prairie Star Elementary	96	7.0	7.5					
D0229	7774	Blue Valley	Blue Valley Northwest High	95.5	10.9	7.5	97.5	0.2	96.5	0.3	24.8
D0229	7775	Blue Valley	Heartland Elementary	97.9	1.3	7.5					
D0229	7776	Blue Valley	Prairie Star Middle	98.8	1.6	7.5					
D0229	7777	Blue Valley	Blue Valley West High	95.4	9.3	7.5	97.5	0.2	98.7	0.3	24.1
D0229	7786	Blue Valley	Blue River Elementary	97.4	2.5	7.5					
D0229	7787	Blue Valley	Pleasant Ridge Middle	98	1.1	7.5					
D0229	7788	Blue Valley	Sunset Ridge Elementary	97.6	3.1	7.5					
D0229	7790	Blue Valley	Sunrise Point Elementary	96.8	4.2	7.5					

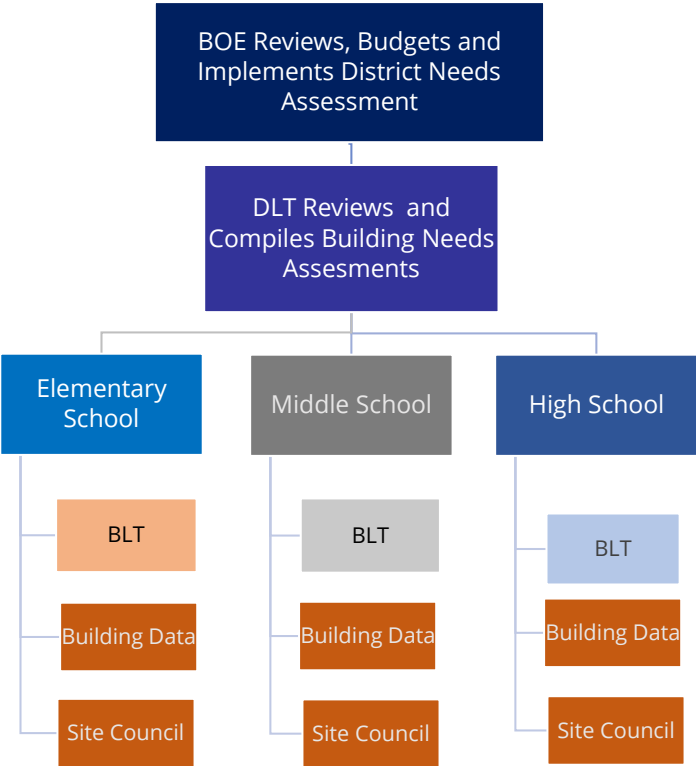
Years for data:

\*Attendance Rate, Chronic Absenteeism, Graduation are from 20-21

\*ACT composites are for class of 2021

\*Dropout Rate is from 19-20

# District Needs Assessment Budgeting Process Chart





## USD 229 - Blue Valley Schools District Needs Assessment Budgeting Table of Contents

1) Building Needs Assessment	Pg 1-7
2) State Assessments Review	Pg 8
3) District Attendance Centers	Pg 9
4) Resources & Data	Pg 10-13
5) Process Flowchart	Pg 14



## 2021-2022 School Year Building Needs Assessment for 2022-2023 Budget Considerations

<b>District:</b> 229 Blue Valley	<b>Bldg #</b>	<b>Grades Served:</b>
<b>School:</b> Blue Valley High	0770	9-12

**Please consider the following questions as you complete the needs assessment for your building.**

SECTION 1: Student Needs	Notes
a. Student Headcount	1,497.0 See Section 1 Data tab
b. Number of students with an active IEP	104.0 See Section 1 Data tab
c. Number of students enrolled in English Language Learner (ELL) services	- See Section 1 Data tab
d. Number of students identified as At-Risk (Free lunch)?	149.0 See Section 1 Data tab
e. Pupil-Teacher Ratio Average	Yes See Pupil-to-Teacher Ratio tab
f. Pupil-Teacher Ratio Median	Yes See Pupil-to-Teacher Ratio tab
g. Are the needs of Foster Care Students being met? If no, what supports are needed?	Yes Assigned District coordinator to address foster student needs
h. Are there gaps in student success among race/ethnicity student subgroups?	Yes
i. Is there a tiered system of support to target reading growth?	No Intervention support system exists within the building and MTSS is under development district-wide
j. Is there a tiered system of support to target math growth?	No Intervention support system exists within the building and MTSS is under development district-wide
k. Are there local assessments to measure reading growth?	Yes Read 180
l. Are there local assessments to measure math growth?	No
m. Are there learning opportunities for students to focus on academic needs outside the traditional classroom setting?	Yes Buildings have intervention opportunities for students such as reading specialist services, math intervention, Read 180, etc.
n. Reviewing state assessment data, what steps are you taking for all students to maximize their scores?	Yes Buildings are writing their blueprints (school learning plans); setting goals around state assessment performance, including action steps
o. Are there set targets/goals to move students out of proficiency Levels 1 and 2 on state assessments?	Yes For Spring 2023, 65% of students in BV will score a 3 or 4 on the KAP ELA assessment. For Spring 2023, 55% of students in BV will score a 3 or 4 on the KAP Math assessment.

## 2021-2022 School Year Building Needs Assessment for 2022-2023 Budget Considerations

<b>District:</b> 229 Blue Valley	<b>Bldg #</b>	<b>Grades Served:</b>
<b>School:</b> Blue Valley High	0770	9-12

**Please consider the following questions as you complete the needs assessment for your building.**

SECTION 2: State Board of Education Outcomes (please utilize your district KESA (accreditation) and Star Recognition plans/rubrics)	Notes
a. How is social/emotional growth being measured?	Yes Panorama
b. What are the targets/goals related to social/emotional growth?	None Parent opt in survey - District goal to effectively use survey data
c. How do you determine students are ready for Kindergarten? (only if building serves Kindergarteners)	N/A
d. What are the targets/goals related to Kindergarten Readiness? (only if building serves Kindergarteners)	N/A
e. How are successes of Individual Plans of Study being measured?	Yes Focus on increasing number of student with at least one market value asset (MVA). Individual Plans of Study are initiated and monitored with individual student and parent input with counselor oversight. Measurement occurs with student acquisition of credit, graduation rates, and post high school
f. What are the targets/goals related to postsecondary completion/attendance? (only if building serves Grade 12)	Yes Monitor data through 1) National Student Clearinghouse reports, 2) KSDE report card site
g. How are you ensuring students are civically engaged?	Yes Documented in KESA Report

## 2021-2022 School Year Building Needs Assessment for 2022-2023 Budget Considerations

<b>District:</b> 229 Blue Valley	<b>Bldg #</b>	<b>Grades Served:</b>
<b>School:</b> Blue Valley High	0770	9-12

**Please consider the following questions as you complete the needs assessment for your building.**

<b>SECTION 3: Curriculum Needs</b>		<b>Notes</b>
a. What extended learning opportunities are provided (after school programs, summer school programs, etc.)?	Yes	Summer school programs for students who need to recover credits and options for all students to take core credits. Also providing after-school space for extended learning.
b. Are there appropriate and adequate instructional materials?	Yes	District provided instructional materials for all core content areas. Curriculum materials are reviewed and updated on a cyclical basis. Materials are chosen based on alignment to state standards and district curriculum.
c. Is current technology appropriate? If no, what technology is needed to support the curriculum?	Yes	Each student in grades 9-12 are provided a Macbook Air. Most classrooms are outfitted with projection and teachers are all assigned individual devices.
<b>SECTION 4: Educational Capacities (pursuant to K.S.A. 72-3218)</b>		<b>Notes</b>
a. Subjects and areas of instruction necessary to meet the graduation requirements adopted by the state board of education are taught. (only if building serves Grade 12)	Yes	
b. Is every child in your school provided at least the following capacities?	Yes	
1. Sufficient oral and written communication skills to enable students to function in complex and rapidly changing civilization.	Yes	
2. Sufficient knowledge of economic, social, and political systems to enable students to make informed choices.	Yes	
3. Sufficient understanding of governmental processes to enable the student to understand the issues that affect his or her community, state and nation.	Yes	
4. Sufficient self-knowledge and knowledge of his or her mental and physical wellness.	Yes	
5. Sufficient grounding in the arts to enable each student to appreciate his or her cultural and historical heritage.	Yes	

## 2021-2022 School Year Building Needs Assessment for 2022-2023 Budget Considerations

<b>District:</b> 229 Blue Valley	<b>Bldg #</b>	<b>Grades Served:</b>
<b>School:</b> Blue Valley High	0770	9-12

**Please consider the following questions as you complete the needs assessment for your building.**

6. Sufficient training or preparation for advanced training in either academic or vocational fields so as to enable each child to choose and pursue life work intelligently.	Yes	
7. Sufficient levels of academic or vocational skills to enable students to compete favorably with their counterparts in surrounding states, in academics or in job market.	Yes	

## 2021-2022 School Year Building Needs Assessment for 2022-2023 Budget Considerations

<b>District:</b> 229 Blue Valley	<b>Bldg #</b>	<b>Grades Served:</b>
<b>School:</b> Blue Valley High	0770	9-12

**Please consider the following questions as you complete the needs assessment for your building.**

SECTION 5: Staff Needs		Notes
a. Is there adequate personnel/staff to meet the needs of the school and the needs of students under ESEA guidelines, which requires every classroom to contain an educator who is certified in the content area being taught in said classroom, and meet the goals of the school?	Yes	Appropriate/effective class size ratios monitored throughout the spring for the following school year
b. How many classified support staff are currently employed?	42	20-May-22
c. How many classified support staff are needed?		Competitive labor market is challenging ability to properly fill support staff vacancies.
d. Are there enough appropriately licensed support personnel such as counselors, librarians, nurses, etc.?	Yes	Student needs and enrollment are monitored each spring for the following school year when it comes to all staffing needs, both certified and classified.
e. Are principals & other key staff trained to provide instructional leadership and professional development to teachers?	Yes	District Learning Leader monthly meetings
f. What staff development is necessary for teachers to support student success and meet the school improvement goals?	Yes	Job-embedded, relevant, collaborative, sustainable, and results-oriented professional learning that advances educator effectiveness to further district and school improvement goals and ensure life readiness and personal excellence for all students
SECTION 6: Facility Needs		Notes
a. Is there adequate space for student learning?	Yes	Adequate space for student learning is addressed either through the capital outlay committee or bond committee process
b. Are there necessary repairs and/or adjustment to the existing space that need to be made?	Yes	Necessary repairs are addressed through capital outlay or bond requests.
c. Are additional School Buses needed or any additional Routes needed?	No	Based on modified bell schedules for 2022-23, District anticipates adequate regular route capacity for all district attendance centers.

## 2021-2022 School Year Building Needs Assessment for 2022-2023 Budget Considerations

<b>District:</b> <u>229 Blue Valley</u>	<b>Bldg #</b>	<b>Grades Served:</b>
<b>School:</b> <u>Blue Valley High</u>	<b>0770</b>	<b>9-12</b>

**Please consider the following questions as you complete the needs assessment for your building.**

<b>SECTION 7: Family Needs/Community Relations</b>		<b>Notes</b>
a. Do you have regular events to engage parents with teachers?	Yes	Back-to-School night, PTO-sponsored events, parent teacher conferences
b. What types of caregiver training programs (teaching guardians how to give students help with homework, use technology that students will be required to use, etc.) are provided?	Yes	District website has parent tutorials for Canvas and The Learning Connection
c. Do you have an active Site Council?	Yes	
d. Do you have active PTO, PTA, Booster Club, or other organizations with parent leadership?	Yes	
e. What types of communication exists with families? Is it adequate?	Yes	Weekly school e-newsletter, social media, website, e-flyers
f. What types of communication/social media exists with your community? Is it adequate?	Yes	Regular district e-newsletter, quarterly district news magazine, Facebook, Twitter, Instagram, LinkedIn, podcast, website, mobile app

## 2021-2022 School Year Building Needs Assessment for 2022-2023 Budget Considerations

<b>District:</b> 229 Blue Valley	<b>Bldg #</b>	<b>Grades Served:</b>
<b>School:</b> Blue Valley High	0770	9-12

**Please consider the following questions as you complete the needs assessment for your building.**

SECTION 8: School Data		Notes
a. Building Attendance Rate	95.3	See Section 8-KSDE Report Card
b. Building Chronic Absenteeism Rate	11.6	See Section 8-KSDE Report Card
c. District Chronic Absenteeism Rate	7.5	See Section 8-KSDE Report Card
d. District Graduation Rate	97.5	See Section 8-KSDE Report Card
e. District Dropout Rate	0.2	See Section 8-KSDE Report Card
<b>SECTION 8A: High School Needs (buildings with grades 10 through 12 only)</b>		Notes
a. What is our building graduation rate	97.7	See Section 8-KSDE Report Card
b. What is our building dropout rate?	0.5	See Section 8-KSDE Report Card
c. What is our average comprehensive ACT score?	24.3	See Section 8-KSDE Report Card
<b>SECTION 9: Other Data</b>		Notes
a. Based on the building leadership team's analysis, what are the barriers your school faces with non-assessment related issues?		Overall response documented on State Assessments Review tab
1. Can these be achieved with additional resources?		Overall response documented on State Assessments Review tab
2. Why or why not?		Overall response documented on State Assessments Review tab
b. Additional building unique items:		

## 2020-2021 State Assessments Review for 2022-2023 Budget Considerations

<b>District:</b> <u>229 Blue Valley</u>	<b>Bldg #</b>	<b>Grades Served:</b>
<b>School:</b> <u>Blue Valley High</u>	<b>0770</b>	9-12

**(A) Identify the barriers that must be overcome for each student to achieve grade level proficiency on assessments.**

Additional state funding targeted for serving the needs of students who are academically at risk. Additional state funding targeted specifically for Math interventions. Additional state funding for supporting paraprofessional roles. Reversal on the state auditor's position regarding our mid-day "power hour" (1-hour lunch with the opportunity for teachers to provide optional and required interventions for students). Losing "power hour" has had a major impact on our ability to support students. Fewer and more purposeful state-mandated assessments at the high school level. For example, sophomores and juniors lose instructional time to the KAP and to newly required dyslexia screening; all HS students' learning is interrupted by the recent requirement of a free ACT for all juniors. All of these are trailing indicators, and in various ways they are redundant. The state's assessment framework should be streamlined, and the free ACT should be given by ACT, outside of the school day.

**(B) Identify the budget actions that should be taken to address and remove those barriers.**

The District structures the operating budget to achieve pupil-to-teacher ratios to maximize student achievement outcomes, to provide competitive compensation and benefit packages for all staff recruitment and retention, and to ensure efficient administrative and support staffing levels to augment student learning. Barriers identified in (A) above are addressed through the annual staffing need communications between building leadership and central office administration. Non-staffing related barriers will be addressed through allocated building budget funds and district level curriculum and instruction resources. Due to declining enrollment from the pandemic, the decrease to operating resources for FY 2022-23 will be offset by utilization of ESSER funding.

**(C) Identify the amount of time the board estimates it will take for each student to achieve grade level proficiency on the state assessments if the budget actions would be implemented.**

The District has set a goal of moving 55% to level 3 or 4 in math and 65% in ELA reading for FY 2022-23. The Building Leadership Teams utilize summer leadership work sessions during the summer of 2022 to review the building's individual data to set building goals for standard or accelerated growth. Based on the anticipated trajectory, the District goal will be to have 75% at levels 3 or 4 in approximately 5-6 years. However, given student's individual learning issues it is unlikely that the District will realistically achieve 100%. These timelines could be accelerated if special education funding approached 92% of excess cost, which would redirect general fund and local option budget resources for additional certified staffing to achieve grade level proficiency.

**(D) Board Rationale/Comments**

The Board of Education received access to the building needs assessment on July 18, 2022 and reviewed them as a part of the budget process for the 2022-23 school year.

\_\_\_\_\_

**Board President**

\_\_\_\_\_

**Date**



Budget Fiscal Year 2023  
 Needs Assessment Year 2022  
 State Assessment Review Year 2021

9/20/2020  
 Headcount  
 Grand Total

Bldg #	Building Name	Building Level	Grades Served	Grand Total
0756	Lakewood Elementary	Elementary	K-5	553
0757	Lakewood Middle	Middle School	6-8	589
0758	Cedar Hills Elementary	Elementary	K-5	595
0759	Timber Creek Elementary School	Elementary	K-5	614
0765	Liberty View Elementary	Elementary	K-5	415
0766	Blue Valley Dist Johnson Co	Central Office	N/A - Central Office	752
0767	Oxford Middle	Middle School	6-8	580
0768	Stanley Elementary	Elementary	K-5,PK (w/IEP),PK	566
0769	Blue Valley North High	High School	9-12,NG	1531
0770	Blue Valley High	High School	9-12	1489
0771	Morse Elementary	Elementary	K-5	359
0772	Valley Park Elementary	Elementary	K-5	644
0773	Leawood Elementary	Elementary	K-5	568
0774	Stilwell Elementary	Elementary	K-5	244
0776	Blue Valley Middle	Middle School	6-8	560
0777	Mission Trail Elementary	Elementary	K-5,PK (w/IEP),PK	388
0778	Leawood Middle	Middle School	6-8	477
0779	Overland Trail Elementary	Elementary	K-5,PK (w/IEP),PK	630
0780	Indian Valley Elementary	Elementary	K-5	351
0781	Overland Trail Middle	Middle School	6-8	511
0782	Oak Hill Elementary	Elementary	K-5	469
0783	Cottonwood Point Elementary	Elementary	K-5	344
0784	Harmony Middle	Middle School	6-8	534
0785	Harmony Elementary	Elementary	K-5	503
0820	Blue Valley Southwest High School	High School	9-12	1072
0823	Aubry Bend Middle School	Middle School	6-8	779
0937	Wolf Springs Elementary School	Elementary	K-5,PK (w/IEP),PK	563
7773	Prairie Star Elementary	Elementary	K-5	375
7774	Blue Valley Northwest High	High School	9-12	1573
7775	Heartland Elementary	Elementary	K-5	384
7776	Prairie Star Middle	Middle School	6-8	449
7777	Blue Valley West High	High School	9-12,NG	1655
7786	Blue River Elementary	Elementary	K-5	484
7787	Pleasant Ridge Middle	Middle School	6-8	599
7788	Sunset Ridge Elementary	Elementary	K-5,PK (w/IEP),PK	408
7790	Sunrise Point Elementary	Elementary	K-5	458

**Resources**

<b>KSDE's Data Central</b>	
<a href="#">Performance Accountability Report</a>	Demographics, Postsecondary Success Preparation & Effectiveness, STAR Recognition status, Graduation/Success/Effective Rate, Attendance & Dropout Rate, Chronic Absenteeism, ESSA Expenditures per Pupil, Academic Success by Demographics and ACT Performance. <i>*Data is available at district level and building level.</i>
<a href="#">Longitudinal Achievement Report</a>	State Assessments Longitudinal Performance Level. <i>*Data is available at district level and building level.</i>
<a href="#">Public Report Card</a>	Information for Social-Emotional, Kindergarten Readiness, Individual Plans of Study, Graduation, Civic Engagement, Postsecondary Success, IDEA State Performance Plan, Comparative Performance & Fiscal System (Budget data), Teacher Licensure, Dropout, Attendance, Performance Level Reports, ACT Scores, and National Assessment of Educational Progress. <i>*Data is available at district level and most, but not all, is also available at building level.</i>
<a href="#">Kansas K-12 Reports</a>	Attendance Rate, Building Dates of Construction, Building Schedule, Inclement Weather & Inservice Dates, Concurrent High School Enrollment, Lunch Headcount (Free & Reduced), Headcount Enrollment, & Personnel by Type (Certified & Non-Certified) <i>*Data is available at district level and most, but not all, is also available at building level.</i>
<b>Data Central (School Finance Reports)</b>	
<a href="#">Financial Accountability Report</a>	FTE Enrollment, Expenditures for Fund 06 & 08, 16, 62 & 63, All Other Funds and Total of All Funds, State Aid for all weighting categories and Virtual, Total Expenditures for Fund 11, 13, 14, 15, 30, 34, and 51, Fund 08 Transfers, Article 6, Section 6 Constitutional Challenge Expenditures, General Obligation Bonded Indebtedness, and Demographic Headcount. <i>*Data is available at district level only.</i>
<a href="#">Budget Documents</a>	Budget At-a-Glance, Profile, Form 150, Summary and Budget Codes. <i>*Data is available at district level only.</i>
<a href="#">Comparative Performance &amp; Fiscal System (CPFS)</a>	Budget data by fund. <i>*Data is available at district level only.</i>
<a href="#">CPA Reports</a>	Payments made to each organization by County. <i>*Data is available at district level only.</i>
<a href="#">School Finance Reports Warehouse</a>	Bond Proceed Projects, State Foundation (General State) Aid/Supplemental General State Aid, Transportation Data, Transportation Costs (Report), Cash Balances, Current Operating Expenditures, Expenditures per Pupil, Total Expenditures, Meal Pricing Data, Headcount Enrollment (Public & Private, Accredited), Personnel Reports (Certified & Non-Certified), Pupil-Teacher Ratio, Kindergarten Formats (Building & District), Bonded Indebtedness, Salary Reports (Principals, Superintendents & Teachers), Mill Rates, Assessed Valuation <i>*Data is available at district level only unless specified.</i>
<b>KSDE's Web Applications</b>	
AMOSS - Academic Measures of Student Success	
Dropout/Graduation Summary Report	
EDCS (Licensed Personnel Report)	
Kansas Education Systems Accreditation (KESA)	
Kansas Integrated Accountability System (KIAS)	
LCP System	
Pathways	
Principals Building Report (PBR)	
SPEDPro	
Star Recognition	
Superintendent's Organization Report (SO66)	
<b>Local</b>	
MAPP	
NAEP	
Other Local Assessments	
MTSS data	
KansaStar (if applicable)	
ASQ (Kindergarten Readiness Survey)	
Early Childhood Programs	
Social/Emotional Measures	
Civic Engagement Programs	
Curriculum	
Bullying Prevention	
Career and Technical Education (CTE)	
Child Nutrition and Wellness Programs	
Evidence Based At-Risk Practices/Programs	
Graduation Requirements	
Individual Plan of Study Program	
Professional Development Plans	
Parent Engagement	
Community Engagement	
Title I Programs	
Other:	
Other:	
Other:	
Other:	

**FY 2021-22**

<b>enrollment</b>	<b>IEP</b>	<b>ELL</b>	<b>FRM</b>	<b>school</b>	<b>state_school_code</b>
570.0	80.0	16.0	47.0	LKE	0756
603.0	60.0	4.0	61.0	LKM	0757
611.0	65.0	14.0	42.0	CHE	0758
605.0	61.0	-	8.0	TCE	0759
397.0	68.0	8.0	34.0	LVE	0765
597.0	53.0	15.0	108.0	OMS	0767
380.0	112.0	-	42.0	STN	0768
328.0	239.0	-	21.0	HLC	0768
1,569.0	117.0	5.0	202.0	BVN	0769
1,497.0	104.0	-	149.0	BVH	0770
360.0	45.0	2.0	21.0	MOR	0771
630.0	80.0	27.0	110.0	VPE	0772
570.0	77.0	-	21.0	LES	0773
252.0	43.0	-	26.0	STL	0774
558.0	65.0	1.0	68.0	BVM	0776
394.0	72.0	-	45.0	MTE	0777
489.0	52.0	-	39.0	LMS	0778
597.0	82.0	48.0	88.0	OTE	0779
353.0	48.0	15.0	79.0	IVE	0780
514.0	59.0	6.0	93.0	OTM	0781
460.0	66.0	22.0	56.0	OHE	0782
353.0	62.0	3.0	20.0	CPE	0783
530.0	49.0	-	43.0	HMS	0784
506.0	70.0	-	37.0	HES	0785
1,083.0	87.0	-	45.0	SW	0820
762.0	63.0	-	32.0	ABM	0823
371.0	73.0	-	12.0	PSE	7773
1,570.0	105.0	14.0	185.0	NW	7774
383.0	56.0	16.0	40.0	HRT	7775
454.0	52.0	-	25.0	PSM	7776
1,681.0	126.0	10.0	123.0	BVW	7777
505.0	71.0	-	44.0	BRE	7786
600.0	42.0	-	25.0	PRM	7787
400.0	81.0	2.0	14.0	SRE	7788
461.0	75.0	19.0	25.0	SPE	7790
595.0	102.0	-	20.0	WSE	0937

**BVH**

	9TH	10TH	11TH	12TH	
Model Projected	379	338	385	384	1,486
Current Feeder	370				
Current Staffing	76.2	76.2	76.2		

1,680 Program Capacity

PTR Guideline	18.7	18.7	18.7
Projected Staffing	79.5	79.5	79.5
+/- Staffing	(3.3)	(3.3)	(3.3)

<u>Org. No.</u>	<u>Bldg. No.</u>	<u>Organization Name</u>	<u>Building Name</u>	<u>Attendance Rate</u>	<u>% Chronic Absent</u>	<u>Dist Chronic abs</u>	<u>Dist grad</u>	<u>Dist dropout</u>	<u>Bldg grad</u>	<u>Bldg dropout</u>	<u>ACT avg</u>
D0229	0756	Blue Valley	Lakewood Elementary	96.8	7.0	7.5					
D0229	0757	Blue Valley	Lakewood Middle	97.8	2.4	7.5					
D0229	0758	Blue Valley	Cedar Hills Elementary	97.2	3.1	7.5					
D0229	0759	Blue Valley	Timber Creek Elementary School	96.4	6.4	7.5					
D0229	0765	Blue Valley	Liberty View Elementary	97.1	2.8	7.5					
D0229	0767	Blue Valley	Oxford Middle	98.4	1.5	7.5					
D0229	0768	Blue Valley	Stanley Elementary	96.4	8.0	7.5					
D0229	0769	Blue Valley	Blue Valley North High	92.7	22.9	7.5	97.5	0.2	95.9	0.7	25
D0229	0770	Blue Valley	Blue Valley High	95.3	11.6	7.5	97.5	0.2	97.7	0.5	24.3
D0229	0771	Blue Valley	Morse Elementary	97.4	2.0	7.5					
D0229	0772	Blue Valley	Valley Park Elementary	97	7.0	7.5					
D0229	0773	Blue Valley	Leawood Elementary	97.3	1.8	7.5					
D0229	0774	Blue Valley	Stilwell Elementary	94.8	13.4	7.5					
D0229	0776	Blue Valley	Blue Valley Middle	97.2	5.0	7.5					
D0229	0777	Blue Valley	Mission Trail Elementary	95.7	11.0	7.5					
D0229	0778	Blue Valley	Leawood Middle	96.7	4.4	7.5					
D0229	0779	Blue Valley	Overland Trail Elementary	96.2	10.9	7.5					
D0229	0780	Blue Valley	Indian Valley Elementary	96.7	6.2	7.5					
D0229	0781	Blue Valley	Overland Trail Middle	97.1	5.7	7.5					
D0229	0782	Blue Valley	Oak Hill Elementary	96.6	8.5	7.5					
D0229	0783	Blue Valley	Cottonwood Point Elementary	97.7	2.1	7.5					
D0229	0784	Blue Valley	Harmony Middle	98.4	2.1	7.5					
D0229	0785	Blue Valley	Harmony Elementary	97.5	3.6	7.5					
D0229	0820	Blue Valley	Blue Valley Southwest High School	95.1	11.4	7.5	97.5	0.2	98.9	0	22.9
D0229	0823	Blue Valley	Aubry Bend Middle School	97.3	3.6	7.5					
D0229	0937	Blue Valley	Wolf Springs Elementary School	96.2	7.9	7.5					
D0229	7773	Blue Valley	Prairie Star Elementary	96	7.0	7.5					
D0229	7774	Blue Valley	Blue Valley Northwest High	95.5	10.9	7.5	97.5	0.2	96.5	0.3	24.8
D0229	7775	Blue Valley	Heartland Elementary	97.9	1.3	7.5					
D0229	7776	Blue Valley	Prairie Star Middle	98.8	1.6	7.5					
D0229	7777	Blue Valley	Blue Valley West High	95.4	9.3	7.5	97.5	0.2	98.7	0.3	24.1
D0229	7786	Blue Valley	Blue River Elementary	97.4	2.5	7.5					
D0229	7787	Blue Valley	Pleasant Ridge Middle	98	1.1	7.5					
D0229	7788	Blue Valley	Sunset Ridge Elementary	97.6	3.1	7.5					
D0229	7790	Blue Valley	Sunrise Point Elementary	96.8	4.2	7.5					

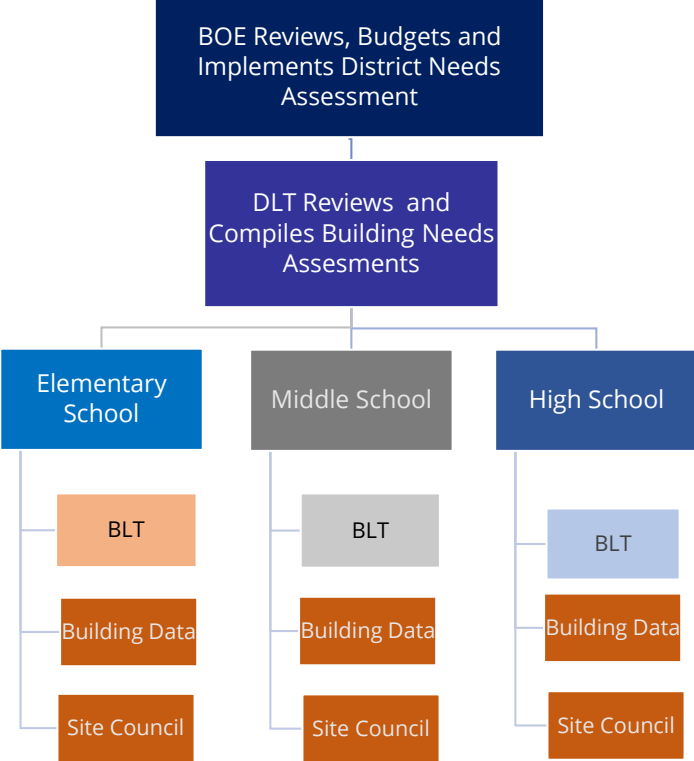
Years for data:

\*Attendance Rate, Chronic Absenteeism, Graduation are from 20-21

\*ACT composites are for class of 2021

\*Dropout Rate is from 19-20

# District Needs Assessment Budgeting Process Chart





## USD 229 - Blue Valley Schools District Needs Assessment Budgeting Table of Contents

1) Building Needs Assessment	Pg 1-7
2) State Assessments Review	Pg 8
3) District Attendance Centers	Pg 9
4) Resources & Data	Pg 10-13
5) Process Flowchart	Pg 14

## 2021-2022 School Year Building Needs Assessment for 2022-2023 Budget Considerations

<b>District:</b> 229 Blue Valley	<b>Bldg #</b>	<b>Grades Served:</b>
<b>School:</b> Blue Valley Southwest High School	0820	9-12

**Please consider the following questions as you complete the needs assessment for your building.**

SECTION 1: Student Needs	Notes
a. Student Headcount	1,083.0 See Section 1 Data tab
b. Number of students with an active IEP	87.0 See Section 1 Data tab
c. Number of students enrolled in English Language Learner (ELL) services	- See Section 1 Data tab
d. Number of students identified as At-Risk (Free lunch)?	45.0 See Section 1 Data tab
e. Pupil-Teacher Ratio Average	Yes See Pupil-to-Teacher Ratio tab
f. Pupil-Teacher Ratio Median	Yes See Pupil-to-Teacher Ratio tab
g. Are the needs of Foster Care Students being met? If no, what supports are needed?	Yes Assigned District coordinator to address foster student needs
h. Are there gaps in student success among race/ethnicity student subgroups?	Yes
i. Is there a tiered system of support to target reading growth?	No Intervention support system exists within the building and MTSS is under development district-wide
j. Is there a tiered system of support to target math growth?	No Intervention support system exists within the building and MTSS is under development district-wide
k. Are there local assessments to measure reading growth?	Yes Read 180
l. Are there local assessments to measure math growth?	No
m. Are there learning opportunities for students to focus on academic needs outside the traditional classroom setting?	Yes Buildings have intervention opportunities for students such as reading specialist services, math intervention, Read 180, etc.
n. Reviewing state assessment data, what steps are you taking for all students to maximize their scores?	Yes Buildings are writing their blueprints (school learning plans); setting goals around state assessment performance, including action steps
o. Are there set targets/goals to move students out of proficiency Levels 1 and 2 on state assessments?	Yes For Spring 2023, 65% of students in BV will score a 3 or 4 on the KAP ELA assessment. For Spring 2023, 55% of students in BV will score a 3 or 4 on the KAP Math assessment.



## 2021-2022 School Year Building Needs Assessment for 2022-2023 Budget Considerations

<b>District:</b> 229 Blue Valley	<b>Bldg #</b>	<b>Grades Served:</b>
<b>School:</b> Blue Valley Southwest High School	0820	9-12

**Please consider the following questions as you complete the needs assessment for your building.**

SECTION 2: State Board of Education Outcomes (please utilize your district KESA (accreditation) and Star Recognition plans/rubrics)		Notes
a. How is social/emotional growth being measured?	Yes	Panorama
b. What are the targets/goals related to social/emotional growth?	None	Parent opt in survey - District goal to effectively use survey data
c. How do you determine students are ready for Kindergarten? (only if building serves Kindergarteners)	N/A	
d. What are the targets/goals related to Kindergarten Readiness? (only if building serves Kindergarteners)	N/A	
e. How are successes of Individual Plans of Study being measured?	Yes	Focus on increasing number of student with at least one market value asset (MVA). Individual Plans of Study are initiated and monitored with individual student and parent input with counselor oversight. Measurement occurs with student acquisition of credit, graduation rates, and post high school <del>surveying</del>
f. What are the targets/goals related to postsecondary completion/attendance? (only if building serves Grade 12)	Yes	Monitor data through 1) National Student Clearinghouse reports, 2) KSDE report card site
g. How are you ensuring students are civically engaged?	Yes	Documented in KESA Report

## 2021-2022 School Year Building Needs Assessment for 2022-2023 Budget Considerations

<b>District:</b> <u>229 Blue Valley</u>	<b>Bldg #</b>	<b>Grades Served:</b>
<b>School:</b> <u>Blue Valley Southwest High School</u>	<b>0820</b>	<b>9-12</b>

**Please consider the following questions as you complete the needs assessment for your building.**

<b>SECTION 3: Curriculum Needs</b>		<b>Notes</b>
a. What extended learning opportunities are provided (after school programs, summer school programs, etc.)?	Yes	Summer school programs for students who need to recover credits and options for all students to take core credits. Also providing after-school space for <u>extended learning</u> .
b. Are there appropriate and adequate instructional materials?	Yes	District provided instructional materials for all core content areas. Curriculum materials are reviewed and updated on a cyclical basis. Materials are chosen based on alignment to state standards and district <u>curriculum</u> .
c. Is current technology appropriate? If no, what technology is needed to support the curriculum?	Yes	Each student in grades 9-12 are provided a Macbook Air. Most classrooms are outfitted with projection and teachers are all assigned individual devices.
<b>SECTION 4: Educational Capacities (pursuant to K.S.A. 72-3218)</b>		<b>Notes</b>
a. Subjects and areas of instruction necessary to meet the graduation requirements adopted by the state board of education are taught. (only if building serves Grade 12)	Yes	
b. Is every child in your school provided at least the following capacities?	Yes	
1. Sufficient oral and written communication skills to enable students to function in complex and rapidly changing civilization.	Yes	
2. Sufficient knowledge of economic, social, and political systems to enable students to make informed choices.	Yes	
3. Sufficient understanding of governmental processes to enable the student to understand the issues that affect his or her community, state and nation.	Yes	
4. Sufficient self-knowledge and knowledge of his or her mental and physical wellness.	Yes	
5. Sufficient grounding in the arts to enable each student to appreciate his or her cultural and historical heritage.	Yes	

## 2021-2022 School Year Building Needs Assessment for 2022-2023 Budget Considerations

<b>District:</b> 229 Blue Valley	<b>Bldg #</b>	<b>Grades Served:</b>
<b>School:</b> Blue Valley Southwest High School	0820	9-12

**Please consider the following questions as you complete the needs assessment for your building.**

6. Sufficient training or preparation for advanced training in either academic or vocational fields so as to enable each child to choose and pursue life work intelligently.	Yes	
7. Sufficient levels of academic or vocational skills to enable students to compete favorably with their counterparts in surrounding states, in academics or in job market.	Yes	

## 2021-2022 School Year Building Needs Assessment for 2022-2023 Budget Considerations

<b>District:</b> <u>229 Blue Valley</u>	<b>Bldg #</b>	<b>Grades Served:</b>
<b>School:</b> <u>Blue Valley Southwest High School</u>	<b>0820</b>	<b>9-12</b>

**Please consider the following questions as you complete the needs assessment for your building.**

<b>SECTION 5: Staff Needs</b>		<b>Notes</b>
a. Is there adequate personnel/staff to meet the needs of the school and the needs of students under ESEA guidelines, which requires every classroom to contain an educator who is certified in the content area being taught in said classroom, and meet the goals of the school?	Yes	Appropriate/effective class size ratios monitored throughout the spring for the following school year
b. How many classified support staff are currently employed?	39	20-May-22
c. How many classified support staff are needed?		Competitive labor market is challenging ability to properly fill support staff vacancies.
d. Are there enough appropriately licensed support personnel such as counselors, librarians, nurses, etc.?	Yes	Student needs and enrollment are monitored each spring for the following school year when it comes to all staffing needs, both certified and classified.
e. Are principals & other key staff trained to provide instructional leadership and professional development to teachers?	Yes	District Learning Leader monthly meetings
f. What staff development is necessary for teachers to support student success and meet the school improvement goals?	Yes	Job-embedded, relevant, collaborative, sustainable, and results-oriented professional learning that advances educator effectiveness to further district and school improvement goals and ensure life readiness and personal excellence for all students
<b>SECTION 6: Facility Needs</b>		<b>Notes</b>
a. Is there adequate space for student learning?	Yes	Adequate space for student learning is addressed either through the capital outlay committee or bond committee process
b. Are there necessary repairs and/or adjustment to the existing space that need to be made?	Yes	Necessary repairs are addressed through capital outlay or bond requests.
c. Are additional School Buses needed or any additional Routes needed?	No	Based on modified bell schedules for 2022-23, District anticipates adequate regular route capacity for all district attendance centers.

## 2021-2022 School Year Building Needs Assessment for 2022-2023 Budget Considerations

<b>District:</b> <u>229 Blue Valley</u>	<b>Bldg #</b>	<b>Grades Served:</b>
<b>School:</b> <u>Blue Valley Southwest High School</u>	<b>0820</b>	<b>9-12</b>

**Please consider the following questions as you complete the needs assessment for your building.**

<b>SECTION 7: Family Needs/Community Relations</b>		<b>Notes</b>
a. Do you have regular events to engage parents with teachers?	Yes	Back-to-School night, PTO-sponsored events, parent teacher conferences
b. What types of caregiver training programs (teaching guardians how to give students help with homework, use technology that students will be required to use, etc.) are provided?	Yes	District website has parent tutorials for Canvas and The Learning Connection
c. Do you have an active Site Council?	Yes	
d. Do you have active PTO, PTA, Booster Club, or other organizations with parent leadership?	Yes	
e. What types of communication exists with families? Is it adequate?	Yes	Weekly school e-newsletter, social media, website, e-flyers
f. What types of communication/social media exists with your community? Is it adequate?	Yes	Regular district e-newsletter, quarterly district news magazine, Facebook, Twitter, Instagram, LinkedIn, podcast, website, mobile app

## 2021-2022 School Year Building Needs Assessment for 2022-2023 Budget Considerations

<b>District:</b> 229 Blue Valley	<b>Bldg #</b>	<b>Grades Served:</b>
<b>School:</b> Blue Valley Southwest High School	0820	9-12

**Please consider the following questions as you complete the needs assessment for your building.**

SECTION 8: School Data		Notes
a. Building Attendance Rate	95.1	See Section 8-KSDE Report Card
b. Building Chronic Absenteeism Rate	11.4	See Section 8-KSDE Report Card
c. District Chronic Absenteeism Rate	7.5	See Section 8-KSDE Report Card
d. District Graduation Rate	97.5	See Section 8-KSDE Report Card
e. District Dropout Rate	0.2	See Section 8-KSDE Report Card
<b>SECTION 8A: High School Needs (buildings with grades 10 through 12 only)</b>		Notes
a. What is our building graduation rate	98.9	See Section 8-KSDE Report Card
b. What is our building dropout rate?	-	See Section 8-KSDE Report Card
c. What is our average comprehensive ACT score?	22.9	See Section 8-KSDE Report Card
<b>SECTION 9: Other Data</b>		Notes
a. Based on the building leadership team's analysis, what are the barriers your school faces with non-assessment related issues?		Overall response documented on State Assessments Review tab
1. Can these be achieved with additional resources?		Overall response documented on State Assessments Review tab
2. Why or why not?		Overall response documented on State Assessments Review tab
b. Additional building unique items:		

## 2020-2021 State Assessments Review for 2022-2023 Budget Considerations

District: <b>229 Blue Valley</b>	Bldg #	Grades Served:
School: <b>Blue Valley Southwest High School</b>	<b>0820</b>	9-12

**(A) Identify the barriers that must be overcome for each student to achieve grade level proficiency on assessments.**

Additional state funding targeted for serving the needs of students who are academically at risk. Additional state funding targeted specifically for Math and Reading interventions. Additional state funding for supporting paraprofessional roles and training. Reversal on the state auditor's position regarding our mid-day "power hour" (1-hour lunch with the opportunity for teachers to provide optional and required interventions for students). Losing "power hour" has had a major impact on our ability to support students with different levels of intervention. Fewer and more purposeful state-mandated assessments at the high school level. If nothing else, timely results in order to be used as data for teachers to support student gaps.

**(B) Identify the budget actions that should be taken to address and remove those barriers.**

The District structures the operating budget to achieve pupil-to-teacher ratios to maximize student achievement outcomes, to provide competitive compensation and benefit packages for all staff recruitment and retention, and to ensure efficient administrative and support staffing levels to augment student learning. Barriers identified in (A) above are addressed through the annual staffing need communications between building leadership and central office administration. Non-staffing related barriers will be addressed through allocated building budget funds and district level curriculum and instruction resources. Due to declining enrollment from the pandemic, the decrease to operating resources for FY 2022-23 will be offset by utilization of ESSER funding.

**(C) Identify the amount of time the board estimates it will take for each student to achieve grade level proficiency on the state assessments if the budget actions would be implemented.**

The District has set a goal of moving 55% to level 3 or 4 in math and 65% in ELA reading for FY 2022-23. The Building Leadership Teams utilize summer leadership work sessions during the summer of 2022 to review the building's individual data to set building goals for standard or accelerated growth. Based on the anticipated trajectory, the District goal will be to have 75% at levels 3 or 4 in approximately 5-6 years. However, given student's individual learning issues it is unlikely that the District will realistically achieve 100%. These timelines could be accelerated if special education funding approached 92% of excess cost, which would redirect general fund and local option budget resources for additional certified staffing to achieve grade level proficiency.

**(D) Board Rationale/Comments**

The Board of Education received access to the building needs assessment on July 18, 2022 and reviewed them as a part of the budget process for the 2022-23 school year.

\_\_\_\_\_  
Board President

\_\_\_\_\_  
Date

Budget Fiscal Year 2023  
 Needs Assessment Year 2022  
 State Assessment Review Year 2021

9/20/2020  
 Headcount  
 Grand Total

Bldg #	Building Name	Building Level	Grades Served	Grand Total
0756	Lakewood Elementary	Elementary	K-5	553
0757	Lakewood Middle	Middle School	6-8	589
0758	Cedar Hills Elementary	Elementary	K-5	595
0759	Timber Creek Elementary School	Elementary	K-5	614
0765	Liberty View Elementary	Elementary	K-5	415
0766	Blue Valley Dist Johnson Co	Central Office	N/A - Central Office	752
0767	Oxford Middle	Middle School	6-8	580
0768	Stanley Elementary	Elementary	K-5,PK (w/IEP),PK	566
0769	Blue Valley North High	High School	9-12,NG	1531
0770	Blue Valley High	High School	9-12	1489
0771	Morse Elementary	Elementary	K-5	359
0772	Valley Park Elementary	Elementary	K-5	644
0773	Leawood Elementary	Elementary	K-5	568
0774	Stilwell Elementary	Elementary	K-5	244
0776	Blue Valley Middle	Middle School	6-8	560
0777	Mission Trail Elementary	Elementary	K-5,PK (w/IEP),PK	388
0778	Leawood Middle	Middle School	6-8	477
0779	Overland Trail Elementary	Elementary	K-5,PK (w/IEP),PK	630
0780	Indian Valley Elementary	Elementary	K-5	351
0781	Overland Trail Middle	Middle School	6-8	511
0782	Oak Hill Elementary	Elementary	K-5	469
0783	Cottonwood Point Elementary	Elementary	K-5	344
0784	Harmony Middle	Middle School	6-8	534
0785	Harmony Elementary	Elementary	K-5	503
0820	Blue Valley Southwest High School	High School	9-12	1072
0823	Aubry Bend Middle School	Middle School	6-8	779
0937	Wolf Springs Elementary School	Elementary	K-5,PK (w/IEP),PK	563
7773	Prairie Star Elementary	Elementary	K-5	375
7774	Blue Valley Northwest High	High School	9-12	1573
7775	Heartland Elementary	Elementary	K-5	384
7776	Prairie Star Middle	Middle School	6-8	449
7777	Blue Valley West High	High School	9-12,NG	1655
7786	Blue River Elementary	Elementary	K-5	484
7787	Pleasant Ridge Middle	Middle School	6-8	599
7788	Sunset Ridge Elementary	Elementary	K-5,PK (w/IEP),PK	408
7790	Sunrise Point Elementary	Elementary	K-5	458



**Resources**

<b>KSDE's Data Central</b>	
<a href="#">Performance Accountability Report</a>	Demographics, Postsecondary Success Preparation & Effectiveness, STAR Recognition status, Graduation/Success/Effective Rate, Attendance & Dropout Rate, Chronic Absenteeism, ESSA Expenditures per Pupil, Academic Success by Demographics and ACT Performance. <i>*Data is available at district level and building level.</i>
<a href="#">Longitudinal Achievement Report</a>	State Assessments Longitudinal Performance Level. <i>*Data is available at district level and building level.</i>
<a href="#">Public Report Card</a>	Information for Social-Emotional, Kindergarten Readiness, Individual Plans of Study, Graduation, Civic Engagement, Postsecondary Success, IDEA State Performance Plan, Comparative Performance & Fiscal System (Budget data), Teacher Licensure, Dropout, Attendance, Performance Level Reports, ACT Scores, and National Assessment of Educational Progress. <i>*Data is available at district level and most, but not all, is also available at building level.</i>
<a href="#">Kansas K-12 Reports</a>	Attendance Rate, Building Dates of Construction, Building Schedule, Inclement Weather & Inservice Dates, Concurrent High School Enrollment, Lunch Headcount (Free & Reduced), Headcount Enrollment, & Personnel by Type (Certified & Non-Certified) <i>*Data is available at district level and most, but not all, is also available at building level.</i>
<b>Data Central (School Finance Reports)</b>	
<a href="#">Financial Accountability Report</a>	FTE Enrollment, Expenditures for Fund 06 & 08, 16, 62 & 63, All Other Funds and Total of All Funds, State Aid for all weighting categories and Virtual, Total Expenditures for Fund 11, 13, 14, 15, 30, 34, and 51, Fund 08 Transfers, Article 6, Section 6 Constitutional Challenge Expenditures, General Obligation Bonded Indebtedness, and Demographic Headcount. <i>*Data is available at district level only.</i>
<a href="#">Budget Documents</a>	Budget At-a-Glance, Profile, Form 150, Summary and Budget Codes. <i>*Data is available at district level only.</i>
<a href="#">Comparative Performance &amp; Fiscal System (CPFS)</a>	Budget data by fund. <i>*Data is available at district level only.</i>
<a href="#">CPA Reports</a>	Payments made to each organization by County. <i>*Data is available at district level only.</i>
<a href="#">School Finance Reports Warehouse</a>	Bond Proceed Projects, State Foundation (General State) Aid/Supplemental General State Aid, Transportation Data, Transportation Costs (Report), Cash Balances, Current Operating Expenditures, Expenditures per Pupil, Total Expenditures, Meal Pricing Data, Headcount Enrollment (Public & Private, Accredited), Personnel Reports (Certified & Non-Certified), Pupil-Teacher Ratio, Kindergarten Formats (Building & District), Bonded Indebtedness, Salary Reports (Principals, Superintendents & Teachers), Mill Rates, Assessed Valuation <i>*Data is available at district level only unless specified.</i>
<b>KSDE's Web Applications</b>	
AMOSS - Academic Measures of Student Success	
Dropout/Graduation Summary Report	
EDCS (Licensed Personnel Report)	
Kansas Education Systems Accreditation (KESA)	
Kansas Integrated Accountability System (KIAS)	
LCP System	
Pathways	
Principals Building Report (PBR)	
SPEDPro	
Star Recognition	
Superintendent's Organization Report (SO66)	
<b>Local</b>	
MAPP	
NAEP	
Other Local Assessments	
MTSS data	
KansaStar (if applicable)	
ASQ (Kindergarten Readiness Survey)	
Early Childhood Programs	
Social/Emotional Measures	
Civic Engagement Programs	
Curriculum	
Bullying Prevention	
Career and Technical Education (CTE)	
Child Nutrition and Wellness Programs	
Evidence Based At-Risk Practices/Programs	
Graduation Requirements	
Individual Plan of Study Program	
Professional Development Plans	
Parent Engagement	
Community Engagement	
Title I Programs	
Other:	
Other:	
Other:	
Other:	

**FY 2021-22**

<b>enrollment</b>	<b>IEP</b>	<b>ELL</b>	<b>FRM</b>	<b>school</b>	<b>state_school_code</b>
570.0	80.0	16.0	47.0	LKE	0756
603.0	60.0	4.0	61.0	LKM	0757
611.0	65.0	14.0	42.0	CHE	0758
605.0	61.0	-	8.0	TCE	0759
397.0	68.0	8.0	34.0	LVE	0765
597.0	53.0	15.0	108.0	OMS	0767
380.0	112.0	-	42.0	STN	0768
328.0	239.0	-	21.0	HLC	0768
1,569.0	117.0	5.0	202.0	BVN	0769
1,497.0	104.0	-	149.0	BVH	0770
360.0	45.0	2.0	21.0	MOR	0771
630.0	80.0	27.0	110.0	VPE	0772
570.0	77.0	-	21.0	LES	0773
252.0	43.0	-	26.0	STL	0774
558.0	65.0	1.0	68.0	BVM	0776
394.0	72.0	-	45.0	MTE	0777
489.0	52.0	-	39.0	LMS	0778
597.0	82.0	48.0	88.0	OTE	0779
353.0	48.0	15.0	79.0	IVE	0780
514.0	59.0	6.0	93.0	OTM	0781
460.0	66.0	22.0	56.0	OHE	0782
353.0	62.0	3.0	20.0	CPE	0783
530.0	49.0	-	43.0	HMS	0784
506.0	70.0	-	37.0	HES	0785
1,083.0	87.0	-	45.0	SW	0820
762.0	63.0	-	32.0	ABM	0823
371.0	73.0	-	12.0	PSE	7773
1,570.0	105.0	14.0	185.0	NW	7774
383.0	56.0	16.0	40.0	HRT	7775
454.0	52.0	-	25.0	PSM	7776
1,681.0	126.0	10.0	123.0	BVW	7777
505.0	71.0	-	44.0	BRE	7786
600.0	42.0	-	25.0	PRM	7787
400.0	81.0	2.0	14.0	SRE	7788
461.0	75.0	19.0	25.0	SPE	7790
595.0	102.0	-	20.0	WSE	0937

**BVSW**

	9TH	10TH	11TH	12TH	
Model Projected	259	263	258	281	1,061
Current Feeder	254				
Current Staffing	56.0	56.0	56.0		

1,715 Program Capacity

PTR Guideline	18.7	18.7	18.7
Projected Staffing	56.7	56.7	56.7
+/- Staffing	(0.7)	(0.7)	(0.7)

<u>Org. No.</u>	<u>Bldg. No.</u>	<u>Organization Name</u>	<u>Building Name</u>	<u>Attendance Rate</u>	<u>% Chronic Absent</u>	<u>Dist Chronic abs</u>	<u>Dist grad</u>	<u>Dist dropout</u>	<u>Bldg grad</u>	<u>Bldg dropout</u>	<u>ACT avg</u>
D0229	0756	Blue Valley	Lakewood Elementary	96.8	7.0	7.5					
D0229	0757	Blue Valley	Lakewood Middle	97.8	2.4	7.5					
D0229	0758	Blue Valley	Cedar Hills Elementary	97.2	3.1	7.5					
D0229	0759	Blue Valley	Timber Creek Elementary School	96.4	6.4	7.5					
D0229	0765	Blue Valley	Liberty View Elementary	97.1	2.8	7.5					
D0229	0767	Blue Valley	Oxford Middle	98.4	1.5	7.5					
D0229	0768	Blue Valley	Stanley Elementary	96.4	8.0	7.5					
D0229	0769	Blue Valley	Blue Valley North High	92.7	22.9	7.5	97.5	0.2	95.9	0.7	25
D0229	0770	Blue Valley	Blue Valley High	95.3	11.6	7.5	97.5	0.2	97.7	0.5	24.3
D0229	0771	Blue Valley	Morse Elementary	97.4	2.0	7.5					
D0229	0772	Blue Valley	Valley Park Elementary	97	7.0	7.5					
D0229	0773	Blue Valley	Leawood Elementary	97.3	1.8	7.5					
D0229	0774	Blue Valley	Stilwell Elementary	94.8	13.4	7.5					
D0229	0776	Blue Valley	Blue Valley Middle	97.2	5.0	7.5					
D0229	0777	Blue Valley	Mission Trail Elementary	95.7	11.0	7.5					
D0229	0778	Blue Valley	Leawood Middle	96.7	4.4	7.5					
D0229	0779	Blue Valley	Overland Trail Elementary	96.2	10.9	7.5					
D0229	0780	Blue Valley	Indian Valley Elementary	96.7	6.2	7.5					
D0229	0781	Blue Valley	Overland Trail Middle	97.1	5.7	7.5					
D0229	0782	Blue Valley	Oak Hill Elementary	96.6	8.5	7.5					
D0229	0783	Blue Valley	Cottonwood Point Elementary	97.7	2.1	7.5					
D0229	0784	Blue Valley	Harmony Middle	98.4	2.1	7.5					
D0229	0785	Blue Valley	Harmony Elementary	97.5	3.6	7.5					
D0229	0820	Blue Valley	Blue Valley Southwest High School	95.1	11.4	7.5	97.5	0.2	98.9	0	22.9
D0229	0823	Blue Valley	Aubry Bend Middle School	97.3	3.6	7.5					
D0229	0937	Blue Valley	Wolf Springs Elementary School	96.2	7.9	7.5					
D0229	7773	Blue Valley	Prairie Star Elementary	96	7.0	7.5					
D0229	7774	Blue Valley	Blue Valley Northwest High	95.5	10.9	7.5	97.5	0.2	96.5	0.3	24.8
D0229	7775	Blue Valley	Heartland Elementary	97.9	1.3	7.5					
D0229	7776	Blue Valley	Prairie Star Middle	98.8	1.6	7.5					
D0229	7777	Blue Valley	Blue Valley West High	95.4	9.3	7.5	97.5	0.2	98.7	0.3	24.1
D0229	7786	Blue Valley	Blue River Elementary	97.4	2.5	7.5					
D0229	7787	Blue Valley	Pleasant Ridge Middle	98	1.1	7.5					
D0229	7788	Blue Valley	Sunset Ridge Elementary	97.6	3.1	7.5					
D0229	7790	Blue Valley	Sunrise Point Elementary	96.8	4.2	7.5					

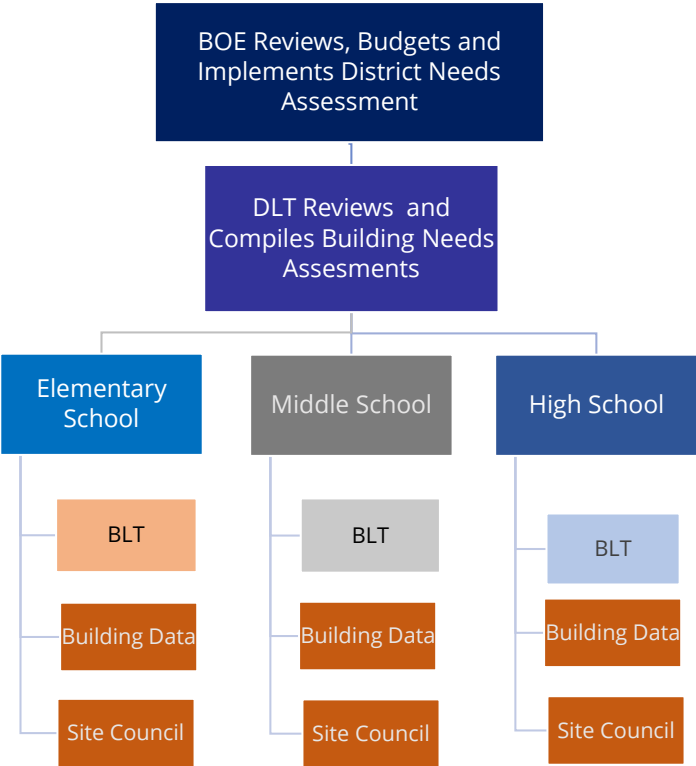
Years for data:

\*Attendance Rate, Chronic Absenteeism, Graduation are from 20-21

\*ACT composites are for class of 2021

\*Dropout Rate is from 19-20

# District Needs Assessment Budgeting Process Chart





## USD 229 - Blue Valley Schools District Needs Assessment Budgeting Table of Contents

1) Building Needs Assessment	Pg 1-7
2) State Assessments Review	Pg 8
3) District Attendance Centers	Pg 9
4) Resources & Data	Pg 10-13
5) Process Flowchart	Pg 14

## 2021-2022 School Year Building Needs Assessment for 2022-2023 Budget Considerations

<b>District:</b> 229 Blue Valley	<b>Bldg #</b>	<b>Grades Served:</b>
<b>School:</b> Blue Valley North High	0769	9-12,NG

**Please consider the following questions as you complete the needs assessment for your building.**

SECTION 1: Student Needs	Notes
a. Student Headcount	1,569.0 See Section 1 Data tab
b. Number of students with an active IEP	117.0 See Section 1 Data tab
c. Number of students enrolled in English Language Learner (ELL) services	5.0 See Section 1 Data tab
d. Number of students identified as At-Risk (Free lunch)?	202.0 See Section 1 Data tab
e. Pupil-Teacher Ratio Average	Yes See Pupil-to-Teacher Ratio tab
f. Pupil-Teacher Ratio Median	Yes See Pupil-to-Teacher Ratio tab
g. Are the needs of Foster Care Students being met? If no, what supports are needed?	Yes Assigned District coordinator to address foster student needs
h. Are there gaps in student success among race/ethnicity student subgroups?	Yes
i. Is there a tiered system of support to target reading growth?	No Intervention support system exists within the building and MTSS is under development district-wide
j. Is there a tiered system of support to target math growth?	No Intervention support system exists within the building and MTSS is under development district-wide
k. Are there local assessments to measure reading growth?	Yes Read 180
l. Are there local assessments to measure math growth?	No
m. Are there learning opportunities for students to focus on academic needs outside the traditional classroom setting?	Yes Buildings have intervention opportunities for students such as reading specialist services, math intervention, Read 180, etc.
n. Reviewing state assessment data, what steps are you taking for all students to maximize their scores?	Yes Buildings are writing their blueprints (school learning plans); setting goals around state assessment performance, including action steps
o. Are there set targets/goals to move students out of proficiency Levels 1 and 2 on state assessments?	Yes For Spring 2023, 65% of students in BV will score a 3 or 4 on the KAP ELA assessment. For Spring 2023, 55% of students in BV will score a 3 or 4 on the KAP Math assessment.

## 2021-2022 School Year Building Needs Assessment for 2022-2023 Budget Considerations

<b>District:</b> 229 Blue Valley	<b>Bldg #</b>	<b>Grades Served:</b>
<b>School:</b> Blue Valley North High	0769	9-12,NG

**Please consider the following questions as you complete the needs assessment for your building.**

SECTION 2: State Board of Education Outcomes (please utilize your district KESA (accreditation) and Star Recognition plans/rubrics)		Notes
a. How is social/emotional growth being measured?	Yes	Panorama
b. What are the targets/goals related to social/emotional growth?	None	Parent opt in survey - District goal to effectively use survey data
c. How do you determine students are ready for Kindergarten? (only if building serves Kindergarteners)	N/A	
d. What are the targets/goals related to Kindergarten Readiness? (only if building serves Kindergarteners)	N/A	
e. How are successes of Individual Plans of Study being measured?	Yes	Focus on increasing number of student with at least one market value asset (MVA). Individual Plans of Study are initiated and monitored with individual student and parent input with counselor oversight. Measurement occurs with student acquisition of credit, graduation rates, and post high school <del>surveying</del>
f. What are the targets/goals related to postsecondary completion/attendance? (only if building serves Grade 12)	Yes	Monitor data through 1) National Student Clearinghouse reports, 2) KSDE report card site
g. How are you ensuring students are civically engaged?	Yes	Documented in KESA Report



## 2021-2022 School Year Building Needs Assessment for 2022-2023 Budget Considerations

<b>District:</b> 229 Blue Valley	<b>Bldg #</b>	<b>Grades Served:</b>
<b>School:</b> Blue Valley North High	0769	9-12,NG

**Please consider the following questions as you complete the needs assessment for your building.**

<b>SECTION 3: Curriculum Needs</b>		<b>Notes</b>
a. What extended learning opportunities are provided (after school programs, summer school programs, etc.)?	Yes	Summer school programs for students who need to recover credits and options for all students to take core credits. Also providing after-school space for extended learning.
b. Are there appropriate and adequate instructional materials?	Yes	District provided instructional materials for all core content areas. Curriculum materials are reviewed and updated on a cyclical basis. Materials are chosen based on alignment to state standards and district curriculum.
c. Is current technology appropriate? If no, what technology is needed to support the curriculum?	Yes	Each student in grades 9-12 are provided a Macbook Air. Most classrooms are outfitted with projection and teachers are all assigned individual devices.
<b>SECTION 4: Educational Capacities (pursuant to K.S.A. 72-3218)</b>		<b>Notes</b>
a. Subjects and areas of instruction necessary to meet the graduation requirements adopted by the state board of education are taught. (only if building serves Grade 12)	Yes	
b. Is every child in your school provided at least the following capacities?	Yes	
1. Sufficient oral and written communication skills to enable students to function in complex and rapidly changing civilization.	Yes	
2. Sufficient knowledge of economic, social, and political systems to enable students to make informed choices.	Yes	
3. Sufficient understanding of governmental processes to enable the student to understand the issues that affect his or her community, state and nation.	Yes	
4. Sufficient self-knowledge and knowledge of his or her mental and physical wellness.	Yes	
5. Sufficient grounding in the arts to enable each student to appreciate his or her cultural and historical heritage.	Yes	

## 2021-2022 School Year Building Needs Assessment for 2022-2023 Budget Considerations

<b>District:</b> 229 Blue Valley	<b>Bldg #</b>	<b>Grades Served:</b>
<b>School:</b> Blue Valley North High	0769	9-12,NG

**Please consider the following questions as you complete the needs assessment for your building.**

6. Sufficient training or preparation for advanced training in either academic or vocational fields so as to enable each child to choose and pursue life work intelligently.	Yes	
7. Sufficient levels of academic or vocational skills to enable students to compete favorably with their counterparts in surrounding states, in academics or in job market.	Yes	

## 2021-2022 School Year Building Needs Assessment for 2022-2023 Budget Considerations

<b>District:</b> <u>229 Blue Valley</u>	<b>Bldg #</b>	<b>Grades Served:</b>
<b>School:</b> <u>Blue Valley North High</u>	<b>0769</b>	<b>9-12,NG</b>

**Please consider the following questions as you complete the needs assessment for your building.**

<b>SECTION 5: Staff Needs</b>		<b>Notes</b>
a. Is there adequate personnel/staff to meet the needs of the school and the needs of students under ESEA guidelines, which requires every classroom to contain an educator who is certified in the content area being taught in said classroom, and meet the goals of the school?	Yes	Appropriate/effective class size ratios monitored throughout the spring for the following school year
b. How many classified support staff are currently employed?	44	20-May-22
c. How many classified support staff are needed?		Competitive labor market is challenging ability to properly fill support staff vacancies.
d. Are there enough appropriately licensed support personnel such as counselors, librarians, nurses, etc.?	Yes	Student needs and enrollment are monitored each spring for the following school year when it comes to all staffing needs, both certified and classified.
e. Are principals & other key staff trained to provide instructional leadership and professional development to teachers?	Yes	District Learning Leader monthly meetings
f. What staff development is necessary for teachers to support student success and meet the school improvement goals?	Yes	Job-embedded, relevant, collaborative, sustainable, and results-oriented professional learning that advances educator effectiveness to further district and school improvement goals and ensure life readiness and personal excellence for all students
<b>SECTION 6: Facility Needs</b>		<b>Notes</b>
a. Is there adequate space for student learning?	Yes	Adequate space for student learning is addressed either through the capital outlay committee or bond committee process
b. Are there necessary repairs and/or adjustment to the existing space that need to be made?	Yes	Necessary repairs are addressed through capital outlay or bond requests.
c. Are additional School Buses needed or any additional Routes needed?	No	Based on modified bell schedules for 2022-23, District anticipates adequate regular route capacity for all district attendance centers.

## 2021-2022 School Year Building Needs Assessment for 2022-2023 Budget Considerations

<b>District:</b> <u>229 Blue Valley</u>	<b>Bldg #</b>	<b>Grades Served:</b>
<b>School:</b> <u>Blue Valley North High</u>	<b>0769</b>	<b>9-12,NG</b>

**Please consider the following questions as you complete the needs assessment for your building.**

<b>SECTION 7: Family Needs/Community Relations</b>		<b>Notes</b>
a. Do you have regular events to engage parents with teachers?	Yes	Back-to-School night, PTO-sponsored events, parent teacher conferences
b. What types of caregiver training programs (teaching guardians how to give students help with homework, use technology that students will be required to use, etc.) are provided?	Yes	District website has parent tutorials for Canvas and The Learning Connection
c. Do you have an active Site Council?	Yes	
d. Do you have active PTO, PTA, Booster Club, or other organizations with parent leadership?	Yes	
e. What types of communication exists with families? Is it adequate?	Yes	Weekly school e-newsletter, social media, website, e-flyers
f. What types of communication/social media exists with your community? Is it adequate?	Yes	Regular district e-newsletter, quarterly district news magazine, Facebook, Twitter, Instagram, LinkedIn, podcast, website, mobile app

## 2021-2022 School Year Building Needs Assessment for 2022-2023 Budget Considerations

<b>District:</b> 229 Blue Valley	<b>Bldg #</b>	<b>Grades Served:</b>
<b>School:</b> Blue Valley North High	0769	9-12,NG

**Please consider the following questions as you complete the needs assessment for your building.**

SECTION 8: School Data		Notes
a. Building Attendance Rate	92.7	See Section 8-KSDE Report Card
b. Building Chronic Absenteeism Rate	22.9	See Section 8-KSDE Report Card
c. District Chronic Absenteeism Rate	7.5	See Section 8-KSDE Report Card
d. District Graduation Rate	97.5	See Section 8-KSDE Report Card
e. District Dropout Rate	0.2	See Section 8-KSDE Report Card
<b>SECTION 8A: High School Needs (buildings with grades 10 through 12 only)</b>		Notes
a. What is our building graduation rate	95.9	See Section 8-KSDE Report Card
b. What is our building dropout rate?	0.7	See Section 8-KSDE Report Card
c. What is our average comprehensive ACT score?	25.0	See Section 8-KSDE Report Card
<b>SECTION 9: Other Data</b>		Notes
a. Based on the building leadership team's analysis, what are the barriers your school faces with non-assessment related issues?		Overall response documented on State Assessments Review tab
1. Can these be achieved with additional resources?		Overall response documented on State Assessments Review tab
2. Why or why not?		Overall response documented on State Assessments Review tab
b. Additional building unique items:		

## 2020-2021 State Assessments Review for 2022-2023 Budget Considerations

<b>District:</b> 229 Blue Valley	<b>Bldg #</b>	<b>Grades Served:</b>
<b>School:</b> Blue Valley North High	0769	9-12,NG

**(A) Identify the barriers that must be overcome for each student to achieve grade level proficiency on assessments.**

More state funding needed for reading and math interventions. More state funding needed for smaller class sizes. Students do not see value in state assessments as it is not relevant to their lives.

**(B) Identify the budget actions that should be taken to address and remove those barriers.**

The District structures the operating budget to achieve pupil-to-teacher ratios to maximize student achievement outcomes, to provide competitive compensation and benefit packages for all staff recruitment and retention, and to ensure efficient administrative and support staffing levels to augment student learning. Barriers identified in (A) above are addressed through the annual staffing need communications between building leadership and central office administration. Non-staffing related barriers will be addressed through allocated building budget funds and district level curriculum and instruction resources. Due to declining enrollment from the pandemic, the decrease to operating resources for FY 2022-23 will be offset by utilization of ESSER funding.

**(C) Identify the amount of time the board estimates it will take for each student to achieve grade level proficiency on the state assessments if the budget actions would be implemented.**

The District has set a goal of moving 55% to level 3 or 4 in math and 65% in ELA reading for FY 2022-23. The Building Leadership Teams utilize summer leadership work sessions during the summer of 2022 to review the building's individual data to set building goals for standard or accelerated growth. Based on the anticipated trajectory, the District goal will be to have 75% at levels 3 or 4 in approximately 5-6 years. However, given student's individual learning issues it is unlikely that the District will realistically achieve 100%. These timelines could be accelerated if special education funding approached 92% of excess cost, which would redirect general fund and local option budget resources for additional certified staffing to achieve grade level proficiency.

**(D) Board Rationale/Comments**

The Board of Education received access to the building needs assessment on July 18, 2022 and reviewed them as a part of the budget process for the 2022-23 school year.

\_\_\_\_\_  
**Board President**

\_\_\_\_\_  
**Date**

Budget Fiscal Year 2023  
 Needs Assessment Year 2022  
 State Assessment Review Year 2021

9/20/2020  
 Headcount  
 Grand Total

Bldg #	Building Name	Building Level	Grades Served	Grand Total
0756	Lakewood Elementary	Elementary	K-5	553
0757	Lakewood Middle	Middle School	6-8	589
0758	Cedar Hills Elementary	Elementary	K-5	595
0759	Timber Creek Elementary School	Elementary	K-5	614
0765	Liberty View Elementary	Elementary	K-5	415
0766	Blue Valley Dist Johnson Co	Central Office	N/A - Central Office	752
0767	Oxford Middle	Middle School	6-8	580
0768	Stanley Elementary	Elementary	K-5,PK (w/IEP),PK	566
0769	Blue Valley North High	High School	9-12,NG	1531
0770	Blue Valley High	High School	9-12	1489
0771	Morse Elementary	Elementary	K-5	359
0772	Valley Park Elementary	Elementary	K-5	644
0773	Leawood Elementary	Elementary	K-5	568
0774	Stilwell Elementary	Elementary	K-5	244
0776	Blue Valley Middle	Middle School	6-8	560
0777	Mission Trail Elementary	Elementary	K-5,PK (w/IEP),PK	388
0778	Leawood Middle	Middle School	6-8	477
0779	Overland Trail Elementary	Elementary	K-5,PK (w/IEP),PK	630
0780	Indian Valley Elementary	Elementary	K-5	351
0781	Overland Trail Middle	Middle School	6-8	511
0782	Oak Hill Elementary	Elementary	K-5	469
0783	Cottonwood Point Elementary	Elementary	K-5	344
0784	Harmony Middle	Middle School	6-8	534
0785	Harmony Elementary	Elementary	K-5	503
0820	Blue Valley Southwest High School	High School	9-12	1072
0823	Aubry Bend Middle School	Middle School	6-8	779
0937	Wolf Springs Elementary School	Elementary	K-5,PK (w/IEP),PK	563
7773	Prairie Star Elementary	Elementary	K-5	375
7774	Blue Valley Northwest High	High School	9-12	1573
7775	Heartland Elementary	Elementary	K-5	384
7776	Prairie Star Middle	Middle School	6-8	449
7777	Blue Valley West High	High School	9-12,NG	1655
7786	Blue River Elementary	Elementary	K-5	484
7787	Pleasant Ridge Middle	Middle School	6-8	599
7788	Sunset Ridge Elementary	Elementary	K-5,PK (w/IEP),PK	408
7790	Sunrise Point Elementary	Elementary	K-5	458

**Resources**

<b>KSDE's Data Central</b>	
<a href="#">Performance Accountability Report</a>	Demographics, Postsecondary Success Preparation & Effectiveness, STAR Recognition status, Graduation/Success/Effective Rate, Attendance & Dropout Rate, Chronic Absenteeism, ESSA Expenditures per Pupil, Academic Success by Demographics and ACT Performance. <i>*Data is available at district level and building level.</i>
<a href="#">Longitudinal Achievement Report</a>	State Assessments Longitudinal Performance Level. <i>*Data is available at district level and building level.</i>
<a href="#">Public Report Card</a>	Information for Social-Emotional, Kindergarten Readiness, Individual Plans of Study, Graduation, Civic Engagement, Postsecondary Success, IDEA State Performance Plan, Comparative Performance & Fiscal System (Budget data), Teacher Licensure, Dropout, Attendance, Performance Level Reports, ACT Scores, and National Assessment of Educational Progress. <i>*Data is available at district level and most, but not all, is also available at building level.</i>
<a href="#">Kansas K-12 Reports</a>	Attendance Rate, Building Dates of Construction, Building Schedule, Inclement Weather & Inservice Dates, Concurrent High School Enrollment, Lunch Headcount (Free & Reduced), Headcount Enrollment, & Personnel by Type (Certified & Non-Certified) <i>*Data is available at district level and most, but not all, is also available at building level.</i>
<b>Data Central (School Finance Reports)</b>	
<a href="#">Financial Accountability Report</a>	FTE Enrollment, Expenditures for Fund 06 & 08, 16, 62 & 63, All Other Funds and Total of All Funds, State Aid for all weighting categories and Virtual, Total Expenditures for Fund 11, 13, 14, 15, 30, 34, and 51, Fund 08 Transfers, Article 6, Section 6 Constitutional Challenge Expenditures, General Obligation Bonded Indebtedness, and Demographic Headcount. <i>*Data is available at district level only.</i>
<a href="#">Budget Documents</a>	Budget At-a-Glance, Profile, Form 150, Summary and Budget Codes. <i>*Data is available at district level only.</i>
<a href="#">Comparative Performance &amp; Fiscal System (CPFS)</a>	Budget data by fund. <i>*Data is available at district level only.</i>
<a href="#">CPA Reports</a>	Payments made to each organization by County. <i>*Data is available at district level only.</i>
<a href="#">School Finance Reports Warehouse</a>	Bond Proceed Projects, State Foundation (General State) Aid/Supplemental General State Aid, Transportation Data, Transportation Costs (Report), Cash Balances, Current Operating Expenditures, Expenditures per Pupil, Total Expenditures, Meal Pricing Data, Headcount Enrollment (Public & Private, Accredited), Personnel Reports (Certified & Non-Certified), Pupil-Teacher Ratio, Kindergarten Formats (Building & District), Bonded Indebtedness, Salary Reports (Principals, Superintendents & Teachers), Mill Rates, Assessed Valuation <i>*Data is available at district level only unless specified.</i>
<b>KSDE's Web Applications</b>	
AMOSS - Academic Measures of Student Success	
Dropout/Graduation Summary Report	
EDCS (Licensed Personnel Report)	
Kansas Education Systems Accreditation (KESA)	
Kansas Integrated Accountability System (KIAS)	
LCP System	
Pathways	
Principals Building Report (PBR)	
SPEDPro	
Star Recognition	
Superintendent's Organization Report (SO66)	
<b>Local</b>	
MAPP	
NAEP	
Other Local Assessments	
MTSS data	
KansaStar (if applicable)	
ASQ (Kindergarten Readiness Survey)	
Early Childhood Programs	
Social/Emotional Measures	
Civic Engagement Programs	
Curriculum	
Bullying Prevention	
Career and Technical Education (CTE)	
Child Nutrition and Wellness Programs	
Evidence Based At-Risk Practices/Programs	
Graduation Requirements	
Individual Plan of Study Program	
Professional Development Plans	
Parent Engagement	
Community Engagement	
Title I Programs	
Other:	
Other:	
Other:	
Other:	



**FY 2021-22**

<b>enrollment</b>	<b>IEP</b>	<b>ELL</b>	<b>FRM</b>	<b>school</b>	<b>state_school_code</b>
570.0	80.0	16.0	47.0	LKE	0756
603.0	60.0	4.0	61.0	LKM	0757
611.0	65.0	14.0	42.0	CHE	0758
605.0	61.0	-	8.0	TCE	0759
397.0	68.0	8.0	34.0	LVE	0765
597.0	53.0	15.0	108.0	OMS	0767
380.0	112.0	-	42.0	STN	0768
328.0	239.0	-	21.0	HLC	0768
1,569.0	117.0	5.0	202.0	BVN	0769
1,497.0	104.0	-	149.0	BVH	0770
360.0	45.0	2.0	21.0	MOR	0771
630.0	80.0	27.0	110.0	VPE	0772
570.0	77.0	-	21.0	LES	0773
252.0	43.0	-	26.0	STL	0774
558.0	65.0	1.0	68.0	BVM	0776
394.0	72.0	-	45.0	MTE	0777
489.0	52.0	-	39.0	LMS	0778
597.0	82.0	48.0	88.0	OTE	0779
353.0	48.0	15.0	79.0	IVE	0780
514.0	59.0	6.0	93.0	OTM	0781
460.0	66.0	22.0	56.0	OHE	0782
353.0	62.0	3.0	20.0	CPE	0783
530.0	49.0	-	43.0	HMS	0784
506.0	70.0	-	37.0	HES	0785
1,083.0	87.0	-	45.0	SW	0820
762.0	63.0	-	32.0	ABM	0823
371.0	73.0	-	12.0	PSE	7773
1,570.0	105.0	14.0	185.0	NW	7774
383.0	56.0	16.0	40.0	HRT	7775
454.0	52.0	-	25.0	PSM	7776
1,681.0	126.0	10.0	123.0	BVW	7777
505.0	71.0	-	44.0	BRE	7786
600.0	42.0	-	25.0	PRM	7787
400.0	81.0	2.0	14.0	SRE	7788
461.0	75.0	19.0	25.0	SPE	7790
595.0	102.0	-	20.0	WSE	0937

**BVN**

	9TH	10TH	11TH	12TH	
Model Projected	344	414	375	354	1,487
Current Feeder	340				
Current Staffing	81.7	81.7	81.7		

1,731 Program Capacity

PTR Guideline	18.7	18.7	18.7
Projected Staffing	79.5	79.5	79.5
+/- Staffing	2.2	2.2	2.2

<u>Org. No.</u>	<u>Bldg. No.</u>	<u>Organization Name</u>	<u>Building Name</u>	<u>Attendance Rate</u>	<u>% Chronic Absent</u>	<u>Dist Chronic abs</u>	<u>Dist grad</u>	<u>Dist dropout</u>	<u>Bldg grad</u>	<u>Bldg dropout</u>	<u>ACT avg</u>
D0229	0756	Blue Valley	Lakewood Elementary	96.8	7.0	7.5					
D0229	0757	Blue Valley	Lakewood Middle	97.8	2.4	7.5					
D0229	0758	Blue Valley	Cedar Hills Elementary	97.2	3.1	7.5					
D0229	0759	Blue Valley	Timber Creek Elementary School	96.4	6.4	7.5					
D0229	0765	Blue Valley	Liberty View Elementary	97.1	2.8	7.5					
D0229	0767	Blue Valley	Oxford Middle	98.4	1.5	7.5					
D0229	0768	Blue Valley	Stanley Elementary	96.4	8.0	7.5					
D0229	0769	Blue Valley	Blue Valley North High	92.7	22.9	7.5	97.5	0.2	95.9	0.7	25
D0229	0770	Blue Valley	Blue Valley High	95.3	11.6	7.5	97.5	0.2	97.7	0.5	24.3
D0229	0771	Blue Valley	Morse Elementary	97.4	2.0	7.5					
D0229	0772	Blue Valley	Valley Park Elementary	97	7.0	7.5					
D0229	0773	Blue Valley	Leawood Elementary	97.3	1.8	7.5					
D0229	0774	Blue Valley	Stilwell Elementary	94.8	13.4	7.5					
D0229	0776	Blue Valley	Blue Valley Middle	97.2	5.0	7.5					
D0229	0777	Blue Valley	Mission Trail Elementary	95.7	11.0	7.5					
D0229	0778	Blue Valley	Leawood Middle	96.7	4.4	7.5					
D0229	0779	Blue Valley	Overland Trail Elementary	96.2	10.9	7.5					
D0229	0780	Blue Valley	Indian Valley Elementary	96.7	6.2	7.5					
D0229	0781	Blue Valley	Overland Trail Middle	97.1	5.7	7.5					
D0229	0782	Blue Valley	Oak Hill Elementary	96.6	8.5	7.5					
D0229	0783	Blue Valley	Cottonwood Point Elementary	97.7	2.1	7.5					
D0229	0784	Blue Valley	Harmony Middle	98.4	2.1	7.5					
D0229	0785	Blue Valley	Harmony Elementary	97.5	3.6	7.5					
D0229	0820	Blue Valley	Blue Valley Southwest High School	95.1	11.4	7.5	97.5	0.2	98.9	0	22.9
D0229	0823	Blue Valley	Aubry Bend Middle School	97.3	3.6	7.5					
D0229	0937	Blue Valley	Wolf Springs Elementary School	96.2	7.9	7.5					
D0229	7773	Blue Valley	Prairie Star Elementary	96	7.0	7.5					
D0229	7774	Blue Valley	Blue Valley Northwest High	95.5	10.9	7.5	97.5	0.2	96.5	0.3	24.8
D0229	7775	Blue Valley	Heartland Elementary	97.9	1.3	7.5					
D0229	7776	Blue Valley	Prairie Star Middle	98.8	1.6	7.5					
D0229	7777	Blue Valley	Blue Valley West High	95.4	9.3	7.5	97.5	0.2	98.7	0.3	24.1
D0229	7786	Blue Valley	Blue River Elementary	97.4	2.5	7.5					
D0229	7787	Blue Valley	Pleasant Ridge Middle	98	1.1	7.5					
D0229	7788	Blue Valley	Sunset Ridge Elementary	97.6	3.1	7.5					
D0229	7790	Blue Valley	Sunrise Point Elementary	96.8	4.2	7.5					

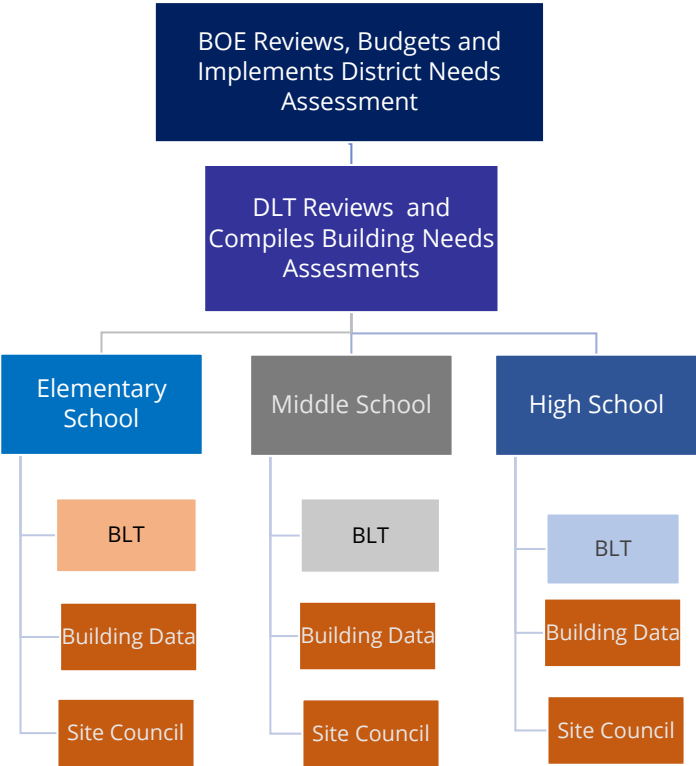
Years for data:

\*Attendance Rate, Chronic Absenteeism, Graduation are from 20-21

\*ACT composites are for class of 2021

\*Dropout Rate is from 19-20

# District Needs Assessment Budgeting Process Chart





## USD 229 - Blue Valley Schools District Needs Assessment Budgeting Table of Contents

1) Building Needs Assessment	Pg 1-7
2) State Assessments Review	Pg 8
3) District Attendance Centers	Pg 9
4) Resources & Data	Pg 10-13
5) Process Flowchart	Pg 14

## 2021-2022 School Year Building Needs Assessment for 2022-2023 Budget Considerations

<b>District:</b> 229 Blue Valley	<b>Bldg #</b>	<b>Grades Served:</b>
<b>School:</b> Blue Valley West High	7777	9-12,NG

**Please consider the following questions as you complete the needs assessment for your building.**

SECTION 1: Student Needs	Notes
a. Student Headcount	1,681.0 See Section 1 Data tab
b. Number of students with an active IEP	126.0 See Section 1 Data tab
c. Number of students enrolled in English Language Learner (ELL) services	10.0 See Section 1 Data tab
d. Number of students identified as At-Risk (Free lunch)?	123.0 See Section 1 Data tab
e. Pupil-Teacher Ratio Average	Yes See Pupil-to-Teacher Ratio tab
f. Pupil-Teacher Ratio Median	Yes See Pupil-to-Teacher Ratio tab
g. Are the needs of Foster Care Students being met? If no, what supports are needed?	Yes Assigned District coordinator to address foster student needs
h. Are there gaps in student success among race/ethnicity student subgroups?	Yes
i. Is there a tiered system of support to target reading growth?	No Intervention support system exists within the building and MTSS is under development district-wide
j. Is there a tiered system of support to target math growth?	No Intervention support system exists within the building and MTSS is under development district-wide
k. Are there local assessments to measure reading growth?	Yes Read 180
l. Are there local assessments to measure math growth?	No
m. Are there learning opportunities for students to focus on academic needs outside the traditional classroom setting?	Yes Buildings have intervention opportunities for students such as reading specialist services, math intervention, Read 180, etc.
n. Reviewing state assessment data, what steps are you taking for all students to maximize their scores?	Yes Buildings are writing their blueprints (school learning plans); setting goals around state assessment performance, including action steps
o. Are there set targets/goals to move students out of proficiency Levels 1 and 2 on state assessments?	Yes For Spring 2023, 65% of students in BV will score a 3 or 4 on the KAP ELA assessment. For Spring 2023, 55% of students in BV will score a 3 or 4 on the KAP Math assessment.

## 2021-2022 School Year Building Needs Assessment for 2022-2023 Budget Considerations

<b>District:</b> 229 Blue Valley	<b>Bldg #</b>	<b>Grades Served:</b>
<b>School:</b> Blue Valley West High	7777	9-12,NG

**Please consider the following questions as you complete the needs assessment for your building.**

SECTION 2: State Board of Education Outcomes (please utilize your district KESA (accreditation) and Star Recognition plans/rubrics)		Notes
a. How is social/emotional growth being measured?	Yes	Panorama
b. What are the targets/goals related to social/emotional growth?	None	Parent opt in survey - District goal to effectively use survey data
c. How do you determine students are ready for Kindergarten? (only if building serves Kindergarteners)	N/A	
d. What are the targets/goals related to Kindergarten Readiness? (only if building serves Kindergarteners)	N/A	
e. How are successes of Individual Plans of Study being measured?	Yes	Focus on increasing number of student with at least one market value asset (MVA). Individual Plans of Study are initiated and monitored with individual student and parent input with counselor oversight. Measurement occurs with student acquisition of credit, graduation rates, and post high school <del>surveying</del>
f. What are the targets/goals related to postsecondary completion/attendance? (only if building serves Grade 12)	Yes	Monitor data through 1) National Student Clearinghouse reports, 2) KSDE report card site
g. How are you ensuring students are civically engaged?	Yes	Documented in KESA Report

## 2021-2022 School Year Building Needs Assessment for 2022-2023 Budget Considerations

<b>District:</b> 229 Blue Valley	<b>Bldg #</b>	<b>Grades Served:</b>
<b>School:</b> Blue Valley West High	7777	9-12,NG

**Please consider the following questions as you complete the needs assessment for your building.**

<b>SECTION 3: Curriculum Needs</b>		<b>Notes</b>
a. What extended learning opportunities are provided (after school programs, summer school programs, etc.)?	Yes	Summer school programs for students who need to recover credits and options for all students to take core credits. Also providing after-school space for extended learning.
b. Are there appropriate and adequate instructional materials?	Yes	District provided instructional materials for all core content areas. Curriculum materials are reviewed and updated on a cyclical basis. Materials are chosen based on alignment to state standards and district curriculum.
c. Is current technology appropriate? If no, what technology is needed to support the curriculum?	Yes	Each student in grades 9-12 are provided a Macbook Air. Most classrooms are outfitted with projection and teachers are all assigned individual devices.
<b>SECTION 4: Educational Capacities (pursuant to K.S.A. 72-3218)</b>		<b>Notes</b>
a. Subjects and areas of instruction necessary to meet the graduation requirements adopted by the state board of education are taught. (only if building serves Grade 12)	Yes	
b. Is every child in your school provided at least the following capacities?	Yes	
1. Sufficient oral and written communication skills to enable students to function in complex and rapidly changing civilization.	Yes	
2. Sufficient knowledge of economic, social, and political systems to enable students to make informed choices.	Yes	
3. Sufficient understanding of governmental processes to enable the student to understand the issues that affect his or her community, state and nation.	Yes	
4. Sufficient self-knowledge and knowledge of his or her mental and physical wellness.	Yes	
5. Sufficient grounding in the arts to enable each student to appreciate his or her cultural and historical heritage.	Yes	



## 2021-2022 School Year Building Needs Assessment for 2022-2023 Budget Considerations

<b>District:</b> 229 Blue Valley	<b>Bldg #</b>	<b>Grades Served:</b>
<b>School:</b> Blue Valley West High	7777	9-12,NG

**Please consider the following questions as you complete the needs assessment for your building.**

6. Sufficient training or preparation for advanced training in either academic or vocational fields so as to enable each child to choose and pursue life work intelligently.	Yes	
7. Sufficient levels of academic or vocational skills to enable students to compete favorably with their counterparts in surrounding states, in academics or in job market.	Yes	

## 2021-2022 School Year Building Needs Assessment for 2022-2023 Budget Considerations

<b>District:</b> 229 Blue Valley	<b>Bldg #</b>	<b>Grades Served:</b>
<b>School:</b> Blue Valley West High	7777	9-12,NG

**Please consider the following questions as you complete the needs assessment for your building.**

SECTION 5: Staff Needs		Notes
a. Is there adequate personnel/staff to meet the needs of the school and the needs of students under ESEA guidelines, which requires every classroom to contain an educator who is certified in the content area being taught in said classroom, and meet the goals of the school?	Yes	Appropriate/effective class size ratios monitored throughout the spring for the following school year
b. How many classified support staff are currently employed?	43	20-May-22
c. How many classified support staff are needed?		Competitive labor market is challenging ability to properly fill support staff vacancies.
d. Are there enough appropriately licensed support personnel such as counselors, librarians, nurses, etc.?	Yes	Student needs and enrollment are monitored each spring for the following school year when it comes to all staffing needs, both certified and classified.
e. Are principals & other key staff trained to provide instructional leadership and professional development to teachers?	Yes	District Learning Leader monthly meetings
f. What staff development is necessary for teachers to support student success and meet the school improvement goals?	Yes	Job-embedded, relevant, collaborative, sustainable, and results-oriented professional learning that advances educator effectiveness to further district and school improvement goals and ensure life readiness and personal excellence for all students
SECTION 6: Facility Needs		Notes
a. Is there adequate space for student learning?	Yes	Adequate space for student learning is addressed either through the capital outlay committee or bond committee process
b. Are there necessary repairs and/or adjustment to the existing space that need to be made?	Yes	Necessary repairs are addressed through capital outlay or bond requests.
c. Are additional School Buses needed or any additional Routes needed?	No	Based on modified bell schedules for 2022-23, District anticipates adequate regular route capacity for all district attendance centers.

## 2021-2022 School Year Building Needs Assessment for 2022-2023 Budget Considerations

<b>District:</b> <u>229 Blue Valley</u>	<b>Bldg #</b>	<b>Grades Served:</b>
<b>School:</b> <u>Blue Valley West High</u>	<b>7777</b>	<b>9-12,NG</b>

**Please consider the following questions as you complete the needs assessment for your building.**

<b>SECTION 7: Family Needs/Community Relations</b>		<b>Notes</b>
a. Do you have regular events to engage parents with teachers?	Yes	Back-to-School night, PTO-sponsored events, parent teacher conferences
b. What types of caregiver training programs (teaching guardians how to give students help with homework, use technology that students will be required to use, etc.) are provided?	Yes	District website has parent tutorials for Canvas and The Learning Connection
c. Do you have an active Site Council?	Yes	
d. Do you have active PTO, PTA, Booster Club, or other organizations with parent leadership?	Yes	
e. What types of communication exists with families? Is it adequate?	Yes	Weekly school e-newsletter, social media, website, e-flyers
f. What types of communication/social media exists with your community? Is it adequate?	Yes	Regular district e-newsletter, quarterly district news magazine, Facebook, Twitter, Instagram, LinkedIn, podcast, website, mobile app

## 2021-2022 School Year Building Needs Assessment for 2022-2023 Budget Considerations

<b>District:</b> 229 Blue Valley	<b>Bldg #</b>	<b>Grades Served:</b>
<b>School:</b> Blue Valley West High	7777	9-12,NG

**Please consider the following questions as you complete the needs assessment for your building.**

SECTION 8: School Data		Notes
a. Building Attendance Rate	95.4	See Section 8-KSDE Report Card
b. Building Chronic Absenteeism Rate	9.3	See Section 8-KSDE Report Card
c. District Chronic Absenteeism Rate	7.5	See Section 8-KSDE Report Card
d. District Graduation Rate	97.5	See Section 8-KSDE Report Card
e. District Dropout Rate	0.2	See Section 8-KSDE Report Card
<b>SECTION 8A: High School Needs (buildings with grades 10 through 12 only)</b>		Notes
a. What is our building graduation rate	98.7	See Section 8-KSDE Report Card
b. What is our building dropout rate?	0.3	See Section 8-KSDE Report Card
c. What is our average comprehensive ACT score?	24.1	See Section 8-KSDE Report Card
<b>SECTION 9: Other Data</b>		Notes
a. Based on the building leadership team's analysis, what are the barriers your school faces with non-assessment related issues?		Overall response documented on State Assessments Review tab
1. Can these be achieved with additional resources?		Overall response documented on State Assessments Review tab
2. Why or why not?		Overall response documented on State Assessments Review tab
b. Additional building unique items:		

## 2020-2021 State Assessments Review for 2022-2023 Budget Considerations

<b>District:</b> <u>229 Blue Valley</u>	<b>Bldg #</b>	<b>Grades Served:</b>
<b>School:</b> <u>Blue Valley West High</u>	<b>7777</b>	9-12,NG

**(A) Identify the barriers that must be overcome for each student to achieve grade level proficiency on assessments.**

Additional state funding to meet the needs of students who are academically at risk. Focused assessment measures (KAP or ACT, not both) that allow for intervention and instruction while students are still in high school. Reversal on the state auditor's position regarding the mid-day "power hour" - this intervention was the most impactful thing we've ever done academically in the high school and had to be aborted because of how the minutes were counted by the auditor.

**(B) Identify the budget actions that should be taken to address and remove those barriers.**

The District structures the operating budget to achieve pupil-to-teacher ratios to maximize student achievement outcomes, to provide competitive compensation and benefit packages for all staff recruitment and retention, and to ensure efficient administrative and support staffing levels to augment student learning. Barriers identified in (A) above are addressed through the annual staffing need communications between building leadership and central office administration. Non-staffing related barriers will be addressed through allocated building budget funds and district level curriculum and instruction resources. Due to declining enrollment from the pandemic, the decrease to operating resources for FY 2022-23 will be offset by utilization of ESSER funding.

**(C) Identify the amount of time the board estimates it will take for each student to achieve grade level proficiency on the state assessments if the budget actions would be implemented.**

The District has set a goal of moving 55% to level 3 or 4 in math and 65% in ELA reading for FY 2022-23. The Building Leadership Teams utilize summer leadership work sessions during the summer of 2022 to review the building's individual data to set building goals for standard or accelerated growth. Based on the anticipated trajectory, the District goal will be to have 75% at levels 3 or 4 in approximately 5-6 years. However, given student's individual learning issues it is unlikely that the District will realistically achieve 100%. These timelines could be accelerated if special education funding approached 92% of excess cost, which would redirect general fund and local option budget resources for additional certified staffing to achieve grade level proficiency.

**(D) Board Rationale/Comments**

The Board of Education received access to the building needs assessment on July 18, 2022 and reviewed them as a part of the budget process for the 2022-23 school year.

\_\_\_\_\_

**Board President**

\_\_\_\_\_

**Date**

Budget Fiscal Year 2023  
 Needs Assessment Year 2022  
 State Assessment Review Year 2021

9/20/2020  
 Headcount  
 Grand Total

Bldg #	Building Name	Building Level	Grades Served	Grand Total
0756	Lakewood Elementary	Elementary	K-5	553
0757	Lakewood Middle	Middle School	6-8	589
0758	Cedar Hills Elementary	Elementary	K-5	595
0759	Timber Creek Elementary School	Elementary	K-5	614
0765	Liberty View Elementary	Elementary	K-5	415
0766	Blue Valley Dist Johnson Co	Central Office	N/A - Central Office	752
0767	Oxford Middle	Middle School	6-8	580
0768	Stanley Elementary	Elementary	K-5,PK (w/IEP),PK	566
0769	Blue Valley North High	High School	9-12,NG	1531
0770	Blue Valley High	High School	9-12	1489
0771	Morse Elementary	Elementary	K-5	359
0772	Valley Park Elementary	Elementary	K-5	644
0773	Leawood Elementary	Elementary	K-5	568
0774	Stilwell Elementary	Elementary	K-5	244
0776	Blue Valley Middle	Middle School	6-8	560
0777	Mission Trail Elementary	Elementary	K-5,PK (w/IEP),PK	388
0778	Leawood Middle	Middle School	6-8	477
0779	Overland Trail Elementary	Elementary	K-5,PK (w/IEP),PK	630
0780	Indian Valley Elementary	Elementary	K-5	351
0781	Overland Trail Middle	Middle School	6-8	511
0782	Oak Hill Elementary	Elementary	K-5	469
0783	Cottonwood Point Elementary	Elementary	K-5	344
0784	Harmony Middle	Middle School	6-8	534
0785	Harmony Elementary	Elementary	K-5	503
0820	Blue Valley Southwest High School	High School	9-12	1072
0823	Aubry Bend Middle School	Middle School	6-8	779
0937	Wolf Springs Elementary School	Elementary	K-5,PK (w/IEP),PK	563
7773	Prairie Star Elementary	Elementary	K-5	375
7774	Blue Valley Northwest High	High School	9-12	1573
7775	Heartland Elementary	Elementary	K-5	384
7776	Prairie Star Middle	Middle School	6-8	449
7777	Blue Valley West High	High School	9-12,NG	1655
7786	Blue River Elementary	Elementary	K-5	484
7787	Pleasant Ridge Middle	Middle School	6-8	599
7788	Sunset Ridge Elementary	Elementary	K-5,PK (w/IEP),PK	408
7790	Sunrise Point Elementary	Elementary	K-5	458

**Resources**

<b>KSDE's Data Central</b>	
<a href="#">Performance Accountability Report</a>	Demographics, Postsecondary Success Preparation & Effectiveness, STAR Recognition status, Graduation/Success/Effective Rate, Attendance & Dropout Rate, Chronic Absenteeism, ESSA Expenditures per Pupil, Academic Success by Demographics and ACT Performance. <i>*Data is available at district level and building level.</i>
<a href="#">Longitudinal Achievement Report</a>	State Assessments Longitudinal Performance Level. <i>*Data is available at district level and building level.</i>
<a href="#">Public Report Card</a>	Information for Social-Emotional, Kindergarten Readiness, Individual Plans of Study, Graduation, Civic Engagement, Postsecondary Success, IDEA State Performance Plan, Comparative Performance & Fiscal System (Budget data), Teacher Licensure, Dropout, Attendance, Performance Level Reports, ACT Scores, and National Assessment of Educational Progress. <i>*Data is available at district level and most, but not all, is also available at building level.</i>
<a href="#">Kansas K-12 Reports</a>	Attendance Rate, Building Dates of Construction, Building Schedule, Inclement Weather & Inservice Dates, Concurrent High School Enrollment, Lunch Headcount (Free & Reduced), Headcount Enrollment, & Personnel by Type (Certified & Non-Certified) <i>*Data is available at district level and most, but not all, is also available at building level.</i>
<b>Data Central (School Finance Reports)</b>	
<a href="#">Financial Accountability Report</a>	FTE Enrollment, Expenditures for Fund 06 & 08, 16, 62 & 63, All Other Funds and Total of All Funds, State Aid for all weighting categories and Virtual, Total Expenditures for Fund 11, 13, 14, 15, 30, 34, and 51, Fund 08 Transfers, Article 6, Section 6 Constitutional Challenge Expenditures, General Obligation Bonded Indebtedness, and Demographic Headcount. <i>*Data is available at district level only.</i>
<a href="#">Budget Documents</a>	Budget At-a-Glance, Profile, Form 150, Summary and Budget Codes. <i>*Data is available at district level only.</i>
<a href="#">Comparative Performance &amp; Fiscal System (CPFS)</a>	Budget data by fund. <i>*Data is available at district level only.</i>
<a href="#">CPA Reports</a>	Payments made to each organization by County. <i>*Data is available at district level only.</i>
<a href="#">School Finance Reports Warehouse</a>	Bond Proceed Projects, State Foundation (General State) Aid/Supplemental General State Aid, Transportation Data, Transportation Costs (Report), Cash Balances, Current Operating Expenditures, Expenditures per Pupil, Total Expenditures, Meal Pricing Data, Headcount Enrollment (Public & Private, Accredited), Personnel Reports (Certified & Non-Certified), Pupil-Teacher Ratio, Kindergarten Formats (Building & District), Bonded Indebtedness, Salary Reports (Principals, Superintendents & Teachers), Mill Rates, Assessed Valuation <i>*Data is available at district level only unless specified.</i>
<b>KSDE's Web Applications</b>	
AMOSS - Academic Measures of Student Success	
Dropout/Graduation Summary Report	
EDCS (Licensed Personnel Report)	
Kansas Education Systems Accreditation (KESA)	
Kansas Integrated Accountability System (KIAS)	
LCP System	
Pathways	
Principals Building Report (PBR)	
SPEDPro	
Star Recognition	
Superintendent's Organization Report (SO66)	
<b>Local</b>	
MAPP	
NAEP	
Other Local Assessments	
MTSS data	
KansaStar (if applicable)	
ASQ (Kindergarten Readiness Survey)	
Early Childhood Programs	
Social/Emotional Measures	
Civic Engagement Programs	
Curriculum	
Bullying Prevention	
Career and Technical Education (CTE)	
Child Nutrition and Wellness Programs	
Evidence Based At-Risk Practices/Programs	
Graduation Requirements	
Individual Plan of Study Program	
Professional Development Plans	
Parent Engagement	
Community Engagement	
Title I Programs	
Other:	
Other:	
Other:	
Other:	

**FY 2021-22**

<b>enrollment</b>	<b>IEP</b>	<b>ELL</b>	<b>FRM</b>	<b>school</b>	<b>state_school_code</b>
570.0	80.0	16.0	47.0	LKE	0756
603.0	60.0	4.0	61.0	LKM	0757
611.0	65.0	14.0	42.0	CHE	0758
605.0	61.0	-	8.0	TCE	0759
397.0	68.0	8.0	34.0	LVE	0765
597.0	53.0	15.0	108.0	OMS	0767
380.0	112.0	-	42.0	STN	0768
328.0	239.0	-	21.0	HLC	0768
1,569.0	117.0	5.0	202.0	BVN	0769
1,497.0	104.0	-	149.0	BVH	0770
360.0	45.0	2.0	21.0	MOR	0771
630.0	80.0	27.0	110.0	VPE	0772
570.0	77.0	-	21.0	LES	0773
252.0	43.0	-	26.0	STL	0774
558.0	65.0	1.0	68.0	BVM	0776
394.0	72.0	-	45.0	MTE	0777
489.0	52.0	-	39.0	LMS	0778
597.0	82.0	48.0	88.0	OTE	0779
353.0	48.0	15.0	79.0	IVE	0780
514.0	59.0	6.0	93.0	OTM	0781
460.0	66.0	22.0	56.0	OHE	0782
353.0	62.0	3.0	20.0	CPE	0783
530.0	49.0	-	43.0	HMS	0784
506.0	70.0	-	37.0	HES	0785
1,083.0	87.0	-	45.0	SW	0820
762.0	63.0	-	32.0	ABM	0823
371.0	73.0	-	12.0	PSE	7773
1,570.0	105.0	14.0	185.0	NW	7774
383.0	56.0	16.0	40.0	HRT	7775
454.0	52.0	-	25.0	PSM	7776
1,681.0	126.0	10.0	123.0	BVW	7777
505.0	71.0	-	44.0	BRE	7786
600.0	42.0	-	25.0	PRM	7787
400.0	81.0	2.0	14.0	SRE	7788
461.0	75.0	19.0	25.0	SPE	7790
595.0	102.0	-	20.0	WSE	0937



**BVW**

	9TH	10TH	11TH	12TH	
Model Projected	378	431	409	366	1,584
Current Feeder	378				
Current Staffing	75.1	75.1	75.1		

1,744 Program Capacity

PTR Guideline	18.7	18.7	18.7	
Projected Staffing	84.7	84.7	84.7	
+/- Staffing	(9.6)	(9.6)	(9.6)	

<u>Org. No.</u>	<u>Bldg. No.</u>	<u>Organization Name</u>	<u>Building Name</u>	<u>Attendance Rate</u>	<u>% Chronic Absent</u>	<u>Dist Chronic abs</u>	<u>Dist grad</u>	<u>Dist dropout</u>	<u>Bldg grad</u>	<u>Bldg dropout</u>	<u>ACT avg</u>
D0229	0756	Blue Valley	Lakewood Elementary	96.8	7.0	7.5					
D0229	0757	Blue Valley	Lakewood Middle	97.8	2.4	7.5					
D0229	0758	Blue Valley	Cedar Hills Elementary	97.2	3.1	7.5					
D0229	0759	Blue Valley	Timber Creek Elementary School	96.4	6.4	7.5					
D0229	0765	Blue Valley	Liberty View Elementary	97.1	2.8	7.5					
D0229	0767	Blue Valley	Oxford Middle	98.4	1.5	7.5					
D0229	0768	Blue Valley	Stanley Elementary	96.4	8.0	7.5					
D0229	0769	Blue Valley	Blue Valley North High	92.7	22.9	7.5	97.5	0.2	95.9	0.7	25
D0229	0770	Blue Valley	Blue Valley High	95.3	11.6	7.5	97.5	0.2	97.7	0.5	24.3
D0229	0771	Blue Valley	Morse Elementary	97.4	2.0	7.5					
D0229	0772	Blue Valley	Valley Park Elementary	97	7.0	7.5					
D0229	0773	Blue Valley	Leawood Elementary	97.3	1.8	7.5					
D0229	0774	Blue Valley	Stilwell Elementary	94.8	13.4	7.5					
D0229	0776	Blue Valley	Blue Valley Middle	97.2	5.0	7.5					
D0229	0777	Blue Valley	Mission Trail Elementary	95.7	11.0	7.5					
D0229	0778	Blue Valley	Leawood Middle	96.7	4.4	7.5					
D0229	0779	Blue Valley	Overland Trail Elementary	96.2	10.9	7.5					
D0229	0780	Blue Valley	Indian Valley Elementary	96.7	6.2	7.5					
D0229	0781	Blue Valley	Overland Trail Middle	97.1	5.7	7.5					
D0229	0782	Blue Valley	Oak Hill Elementary	96.6	8.5	7.5					
D0229	0783	Blue Valley	Cottonwood Point Elementary	97.7	2.1	7.5					
D0229	0784	Blue Valley	Harmony Middle	98.4	2.1	7.5					
D0229	0785	Blue Valley	Harmony Elementary	97.5	3.6	7.5					
D0229	0820	Blue Valley	Blue Valley Southwest High School	95.1	11.4	7.5	97.5	0.2	98.9	0	22.9
D0229	0823	Blue Valley	Aubry Bend Middle School	97.3	3.6	7.5					
D0229	0937	Blue Valley	Wolf Springs Elementary School	96.2	7.9	7.5					
D0229	7773	Blue Valley	Prairie Star Elementary	96	7.0	7.5					
D0229	7774	Blue Valley	Blue Valley Northwest High	95.5	10.9	7.5	97.5	0.2	96.5	0.3	24.8
D0229	7775	Blue Valley	Heartland Elementary	97.9	1.3	7.5					
D0229	7776	Blue Valley	Prairie Star Middle	98.8	1.6	7.5					
D0229	7777	Blue Valley	Blue Valley West High	95.4	9.3	7.5	97.5	0.2	98.7	0.3	24.1
D0229	7786	Blue Valley	Blue River Elementary	97.4	2.5	7.5					
D0229	7787	Blue Valley	Pleasant Ridge Middle	98	1.1	7.5					
D0229	7788	Blue Valley	Sunset Ridge Elementary	97.6	3.1	7.5					
D0229	7790	Blue Valley	Sunrise Point Elementary	96.8	4.2	7.5					

Years for data:

\*Attendance Rate, Chronic Absenteeism, Graduation are from 20-21

\*ACT composites are for class of 2021

\*Dropout Rate is from 19-20

# District Needs Assessment Budgeting Process Chart

