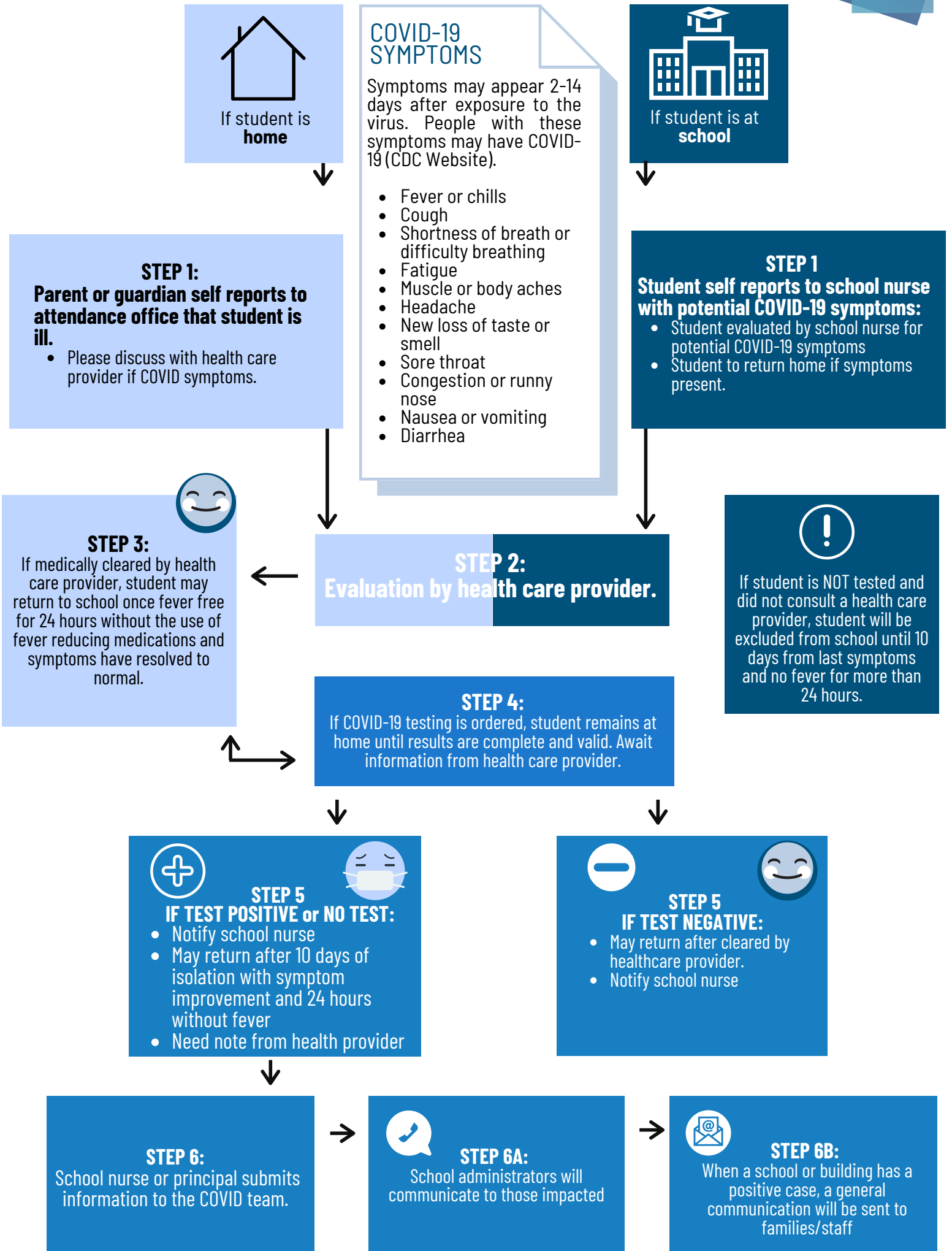


STUDENT

COVID-19 RESPONSE PROTOCOL FOR SYMPTOMATIC STUDENT

This information represents the process that occurs for *most* situations.



We know staff and families want a real-time understanding of COVID-19's impact on the school and district. In addition to direct communication with staff and families as appropriate in the situations noted above, Blue Valley will maintain on its website the number of active confirmed cases by school and the district as a whole.