



PSE Weekly Howl

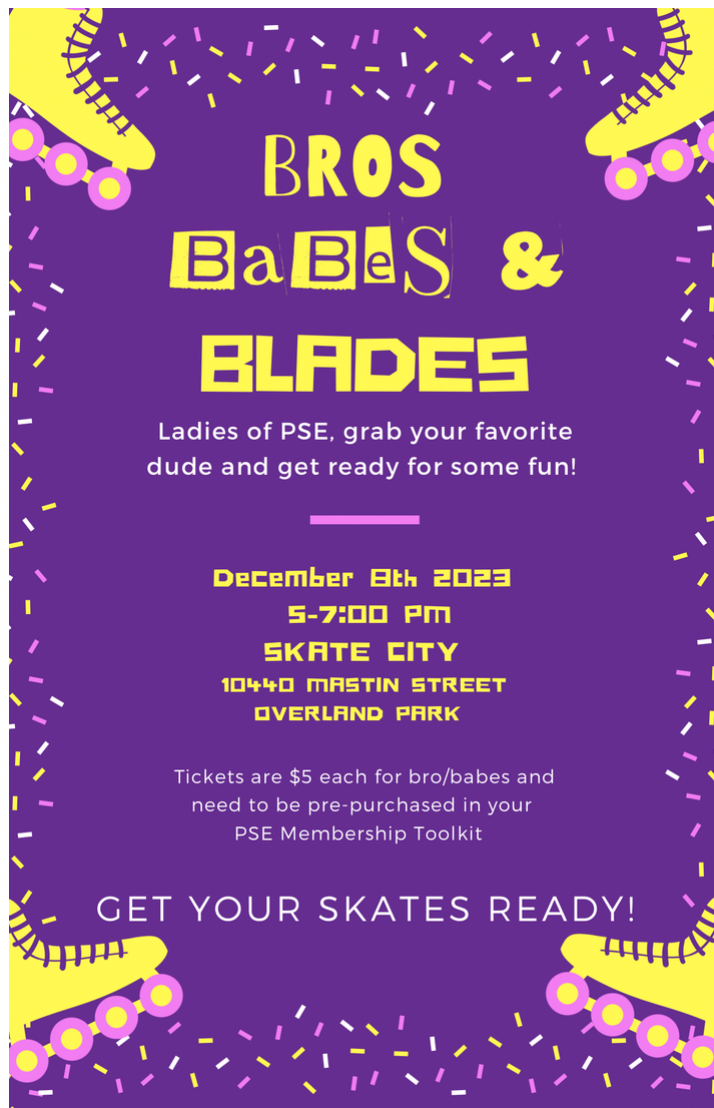
Week of December 4th!

PSE Holiday Helpers

Each year, we support a few families in the PSE community gifts for the holiday season. Rather than asking for specific items with specific sizes, we are asking for gift cards. This will allow parents to shop for better selections for their children. This is completely optional! However, if your family is willing and able to support us, we'd love your help! Please bring gift cards for \$25 to help the families shop for their children. Or feel free to use the following credit card link for gift card donations. <https://praiestarpto.membershiptoolkit.com/form/m/264628>

Gift Cards or donations are due to the PSE office by Friday, December 15th. Thank you in advance for your generous donations! (*Note:* If you know a family in the PSE community who might need assistance anytime during the year, please let me know. We do our best to help support students in need.)

PLEASE MAKE SURE TO PRE-ORDER YOUR TICKETS FOR THIS EVENT!



PSE Spirit Wear

Tigers Inc. is having a **holiday spirit wear pop-up sale on December 12th** in the BVHS lunchroom for all feeder schools!

There will be BVHS apparel available and PSE will have a table with apparel ready to be sold! More details are coming soon!



Our PSE PTO is on Instagram

Your PTO is now on Instagram! Follow along to see all the wonderful things happening at PSE!
[@prairiestarelementarypto](https://www.instagram.com/prairiestarelementarypto)

Food Delivery

Unfortunately, we do not accept food from paid delivery services during the school day. You can come to PSE with their favorite treat if you want to have lunch with your child. Thank you for understanding.

RAISE SOME DOUGH

Help support us!

PRAIRIE STAR ELEMENTARY SCHOOL PARENT TEACHER ORGANIZATION INC

December 6, 2023
8:00 am to 8:00 pm CDT
6800 West 135th Street

In Cafe • Drive-Thru • Pick-Up • Delivery
Enter promo code FUND4U at online checkout.

Panera
FUNDRAISING



7 Days of Holiday Cheer

[7 Days of Holiday Cheer](#)

Begins Tuesday 12/12

12/12 **Candy Cane Day** – Wear red and white to look like this popular holiday treat

12/13 **Let it Snow**–Wear a fun snow cap, scarf, or earmuffs

12/14 **Holiday Head Gear Day** – Wear antlers, elf ears, bows, or any other festive headgear

12/15 **Merry & Bright Day** – Wear your most festive holiday sweater

12/18 **Tired Monday** - Wear your school-appropriate PJs

12/19 **Sharing is Caring**– Wear your favorite holiday outfit

12/20 **MistleTOE Day** – Wear your favorite socks or slippers

Winter Classroom Parties:

Classroom Parties

Students in grades K-4 will participate in winter parties with their classroom teacher on Wednesday December 20th at 10:45. The 5th Grade will have their winter party on Tuesday the

19th, at 2:15. It is tradition to have our 5th graders create Gingerbread Houses. The tradition continues.

Any parents wishing to come to the party must be sharing a time, talent, or treasure. Feel free to check in starting at 10:30 on the 20th make sure to have your photo id ready.

- **Food planning:** All food brought to the parties must be from the nut-safer list. The school nurse will check all food before being brought to the classrooms. The nut safer list, as well as approved brands, are found linked at the bottom of each Friday newsletter.
- **Siblings:** Although former PSE students love to stop by and see their former teachers, classroom parties are organized for the current students at PSE. The classrooms are simply too crowded to accommodate extra bodies on party days, and we want the focus to be on our elementary-aged students. We will not allow middle school students to enter the building on party day without their parents, and we strongly encourage families to make other arrangements for all siblings.

Our utmost job is to keep PSE students and staff safe. Thank you for your understanding and cooperation. We look forward to a fun time celebrating.

December 20th 1/2 Day

We will dismiss at 11:45 on December 20th. The afternoon of the 20th is grade prep for our staff. Winter Break is December 21st-January 3rd.

School Resumes on January 4th!

PSE Yearbook

Please upload your candid pictures! We are currently seeking:

- sneak-a-peek
- first day
- spirit days
- trunk-or-treat/parade/parties
- field trips
- school-related projects/parties
- extracurricular pictures that show off your students' talents-- sports, recitals, competitions, clubs, scouts, etc.

You can follow this link directly to upload pictures to our PSE yearbook library. [ReplayIt Private Photo Submission Site](#).

We are taking orders for the the 23-24 PSE Yearbook through January 2024. Please order at the PTO Membership Toolkit under the New Forms section on the main page. Questions? Email Abbie Moles, Amy Warren and Sally Groesbeck at prairiestaryearbook@gmail.com



Stacey Sperry

Stacey is using Smore to create beautiful newsletters