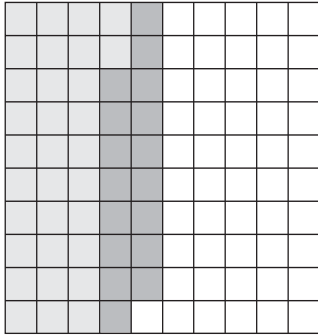


Modeling Addition and Subtraction of Decimals

Adding decimals using a hundredths grid:

Add $0.32 + 0.17$.



Step 1: Shade 32 squares to show 0.32.

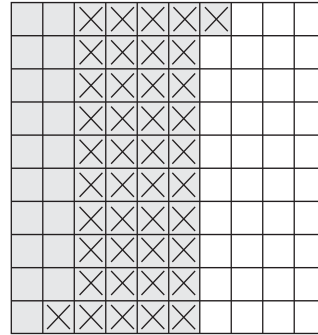
Step 2: Use a different color. Shade 17 squares to show 0.17.

Step 3: Count all the squares that are shaded. How many hundredths are shaded in all? Write the decimal for the total shaded squares: 0.49.

So, $0.32 + 0.17 = 0.49$.

Subtracting decimals using a hundredths grid:

Subtract $0.61 - 0.42$.



Step 1: Shade 61 squares to show 0.61.

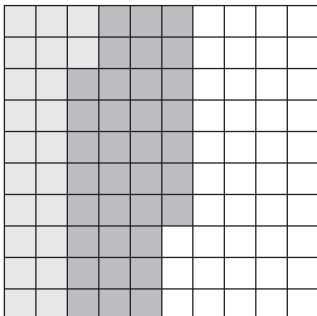
Step 2: Cross out 42 squares to show 0.42.

Step 3: Count the squares that are shaded but not crossed out. Write the decimal: 0.19.

So, $0.61 - 0.42 = 0.19$.

Add or subtract. You may use hundredths grids to help.

1. $0.22 + 0.35 =$ _____



2. $0.52 - 0.41 =$ _____

